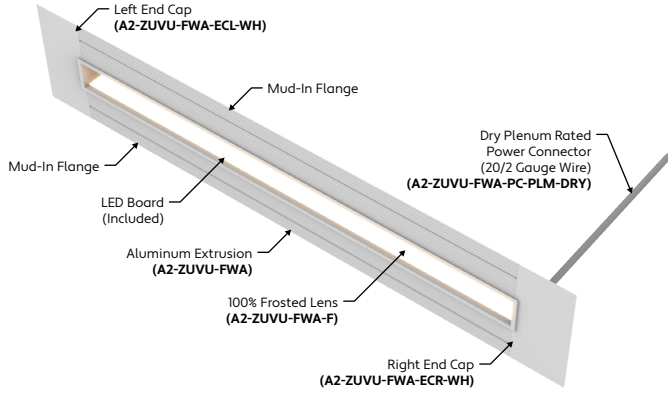


ALUZ

A2 Series | Recessed ZUVU Flush Wall Arc (A2-ZUVU-FWA)

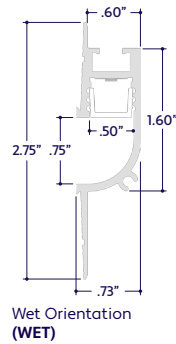
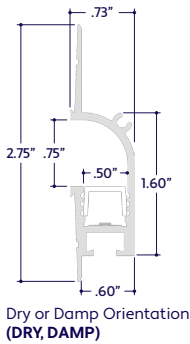
TYPE



GENERAL FEATURES

Applications	Mud-In, Accent, Decorative, Surface, Recessed Lighting
Lens	50% Semi-Frosted or 100% Frosted
Viewing Angle	120°
Length	Built to Order (Shipped in assembled 8' segments)
Construction	Aluminum Extrusion
Field Cutting	Dry and Damp Location Field Cuttable
Weight	0.46 lbs per foot
Mounting	Mud-In
Listing	Dry, Damp, or Wet Location UL2108, 67.1.9, 60.4, CSA C22.2 #9 UL8750, CSA250
Driver	Remote (Sold Separately)
Closet Rating	Up to 3.6 Watts per Foot Maximum
Temperature Ratings	Operating / Startup: -20° to 48°C (-4° to 120°F) Storage: -40° to 76°C (-40° to 170°F)
Installation Link	Link to Installation Instructions >

END VIEWS / DIMENSIONS



ELECTRICAL

Dimming	0-10V, Forward / Reverse Phase, Lutron, DMX, DALI
Maximum Run (Class 1 Applications)	20' (6W), 30' (4W), 36' (3W, 2W)
Maximum Run (Class 2 Applications)	14' (6W), 21' (4W), 28' (3W), 36' (2W)
Luminaire Voltage	24VDC

SPECIFY PRODUCT CODE | CHOOSE FROM DROP DOWNS

Series	Lens	Watts per Foot	Dimming	CCT LED	Listing	Finish	Luminaire Length	
A2-ZUVU-FWA						WH		
ZUVU Flush Wall Arc (A2-ZUVU-FWA)	50% Semi-Frosted Lens (SF)	2 Watts (2W)	0-10V: 100% - 1% (10V)	2400K (24K)	Indoor (DRY)	White (WH)	Specify Length in Feet & Inches Example: 7'8"	
		216 Lumens / ft* ¹	Phase Dimming: Forward Phase / Reverse Phase (PH)	2700K (27K)				
	100% Frosted Lens: Line of Light (F)	3 Watts (3W)	Hi-Lume 1% 3 Wire* ² (L3DA)	3000K (30K)	Outdoor (DAMP)			
		324 Lumens / ft* ¹	Hi-Lume Premier 0.1% JA8* ³ (L3D0)	3500K (35K)				
	4 Watts (4W)	432 Lumens / ft* ¹	DMX-512* ⁴ (DMX)	4000K (40K)	Outdoor* ⁶ (WET)			
		4500K (45K)	5000K (50K)					
	6 Watts (6W)	648 Lumens / ft* ¹	DALI* ⁵ (DALI)	5700K (57K)				
			JAB 0-10V (JA8-10V)					
	Leave Blank for Non-Dimming				Red (R)			
					Green (G)			
				Blue (B)				
				Amber (A)				

Note: Remote drivers wattage sized based on length of run. **Example:** 10' run x 3 watts per foot = 30 watts. Driver will be sized to 30 watts maximum.

- *¹ Lumens per Foot based on 35K CCT LED. **Example:** 108 Lumens x 2 Watts = 216 Lumens per Foot.
- *² (L3DA) 40 watt max Hi-Lume 1% L3DA3W #L3DA4U1UKL-CV240
- *³ (L3D0) 96 watt max Hi-Lume Premier 0.1% #L3D0-96W24V-U
- *⁴ Default DMX address of each fixture is 001. Consult third party DMX commissioner to modify at time of installation.
- *⁵ DALI commissioning to be performed by a third party at time of installation. ALUZ does not provide DALI commissioning.
- *⁶ Run lengths required for Wet Location and IP67 products. Provide run lengths at time of order.

1170 N Red Gum St, Anaheim, CA 92806

aluz.lighting | info@aluz.lighting | 866.ALUZ.LTG | 714.535.7900

© ALUZ All Rights Reserved. ALUZ reserves the right to make changes or withdraw specifications without prior notice.

Specification Submittal

Page 1 of 4

5 / 21 / 2024 / Rev 14



LAMP FEATURES

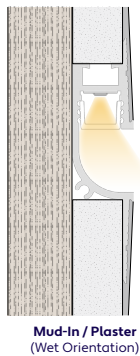
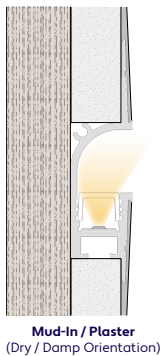
Lamp Type	LEDs (No Mercury)
CRI	> 90
Efficacy (Based on 35K CCT LED)	108 Lumens per Watt

LAMP SPECIFICATIONS

Lamp Number	Correlated Color Temperature / Description	Efficacy (Lumens per Watt)	L70 LED Life
24K	2400 Kelvin (Incandescent White)	108	60,000 hrs.
27K	2700 Kelvin (Warm White)	108	
30K	3000 Kelvin (Warm White)	108	
35K	3500 Kelvin (Neutral White)	108	
40K	4000 Kelvin (Neutral White)	108	
45K	4500 Kelvin (Neutral White)	108	
50K	5000 Kelvin (Cool White)	108	40,000 hrs.
57K	5700 Kelvin (Cool White)	108	
R	Red (621nm)		
G	Green (525nm)		
B	Blue (470nm)		
A	Amber (590nm)		

To calculate Lumens per Foot, multiply Efficacy by Watts per Foot.
Example: 108 Lumens per Watt x 2 Watts per Foot = 216 Lumens per Foot.

MOUNTING OPTIONS



LENS / OPTICS APPEARANCE

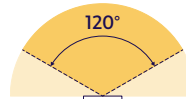


50% Semi-Frosted Lens (SF)
Slight Diode Image
12.5% Loss Factor



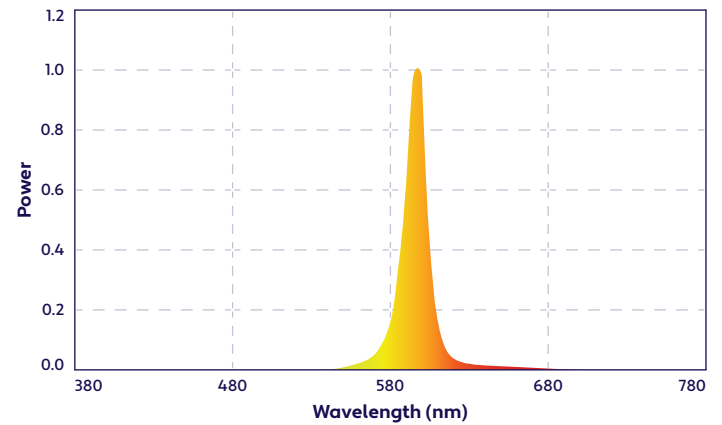
100% Frosted Lens (F)
No Diode Image: Line of Light
25% Loss Factor

BEAM ANGLE



120° x 120° Beam

SPECTRAL POWER DISTRIBUTION AMBER LED (590nm) TURTLE FRIENDLY

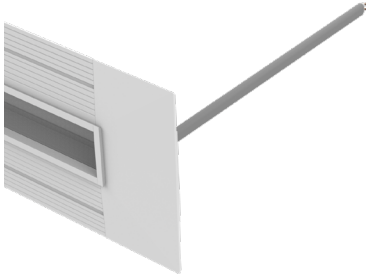


DRIVERS

Dimming Selection	Product Code	Link to Specification Sheet / URL
Phase Dimming: Forward Phase / Reverse Phase	(PH)	https://aluz.lighting/assets/PDFs/DRV/DRIVERS-Brochure.pdf
0-10V: 100% - 1%	(10V)	https://aluz.lighting/assets/PDFs/DRV/DRIVERS-Brochure.pdf
Hi-Lume 1% 3 Wire	(L3DA)	https://aluz.lighting/assets/PDFs/DRV/DRIVERS-Brochure-Lutron.pdf
Hi-Lume Premier 0.1% JA8	(L3DO)	https://aluz.lighting/assets/PDFs/DRV/DRIVERS-Brochure-Lutron.pdf
JA8 0-10V	(JA8-10V)	https://aluz.lighting/assets/PDFs/DRV/DRIVERS-Brochure.pdf
DMX-512	(DMX)	https://aluz.lighting/assets/PDFs/DRV/DRIVERS-Brochure-RDM.pdf
DALI	(DALI)	https://aluz.lighting/assets/PDFs/DRV/DRIVERS-Brochure-RDM.pdf

CONNECTORS (Sold Separately)

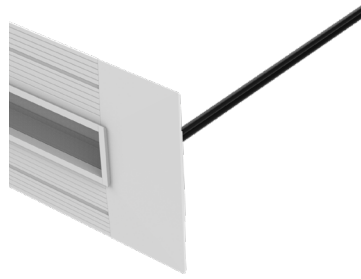
Note: Connectors are factory assembled to each run length. Connectors are subject to change without notice.



Dry Plenum Rated Power Connector
(20/2 Gauge Wire)
(A2-ZUVU-FWA-PC-PLM-DRY-X)
X = Specify Length, 36" Default, 25' Maximum

Part #	Length	Qty.
A2-ZUVU-FWA-PC-PLM-DRY-	36"	
A2-ZUVU-FWA-PC-PLM-DRY-		

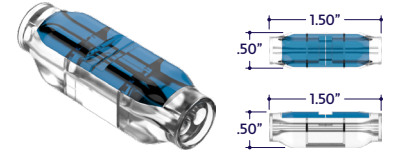
Note: Specify 1 Power Connector for each lead required. Power Connectors are factory assembled to each length.



Wet Power Connector
(20/2 Gauge Wire)
(A2-ZUVU-FWA-PC-WET-X)
X = Specify Length, 36" Default, 25' Maximum

Part #	Length	Qty.
A2-ZUVU-FWA-PC-WET-	36"	
A2-ZUVU-FWA-PC-WET-		

Note: Specify 1 Power Connector for each lead required. Power Connectors are factory assembled to each length.



Wet Splice Connector
(A2-SC-2P-WET)

Part #	Qty.
A2-SC-2P-WET	

END CAPS (Sold Separately)



Left End Cap
(A2-ZUVU-FWA-ECL-WH)

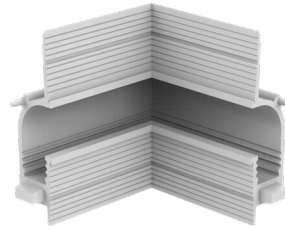
Part #	Qty.
A2-ZUVU-FWA-ECL-WH	



Right End Cap
(A2-ZUVU-FWA-ECR-WH)

Part #	Qty.
A2-ZUVU-FWA-ECR-WH	

MITERED CORNERS (Sold Separately)



90° Internal Corner
(A2-ZUVU-FWA-90D-IN)

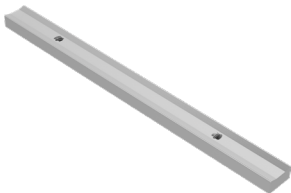
Part #	Qty.
A2-ZUVU-FWA-90D-IN	



90° External Corner
(A2-ZUVU-FWA-90D-EX)

Part #	Qty.
A2-ZUVU-FWA-90D-EX	

MOUNTING ACCESSORIES (Sold Separately)



180° Lock Bar
(A2-ZUVU-LB-180D)

Part #	Qty.
A2-ZUVU-LB-180D	

Note: Use 1 Lock Bar for each connection between two fixture segments.

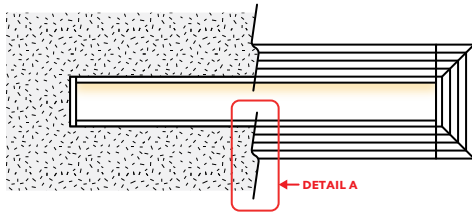


DESIGN GUIDELINES

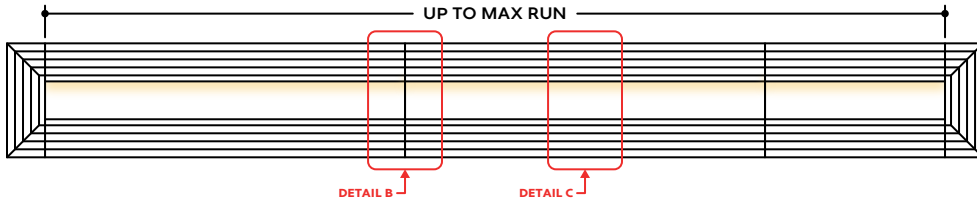
Individual Fixture



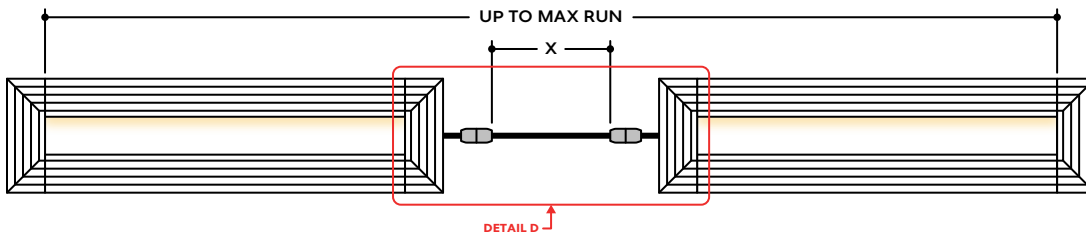
Individual Fixture with Mud-In



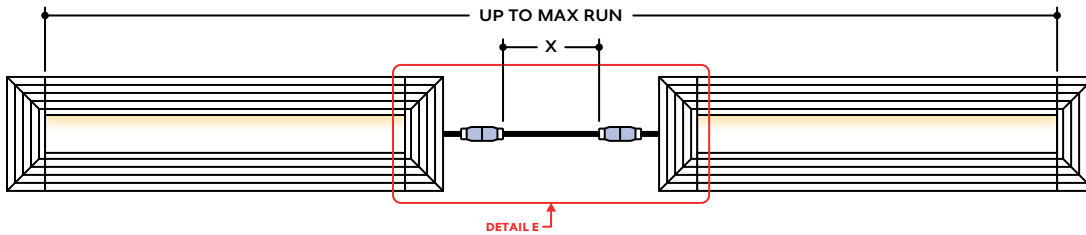
Continuous Run



Runs with Continuous Connector (Dry Location)



Runs with Continuous Connector (Wet Location)



KEY

- Detail A** **Mud-In:** Plaster is used to cover the flanges of the extrusion, leaving a flush appearance. Refer to installation instructions for details.
- Detail B** **Two Extrusions Meet:** Two extrusion segments meet. Refer to installation instructions for additional details.
- Detail C** **Two Lenses Meet:** Lenses are staggered so that the lens always overlaps where two extrusion segments meet. Refer to installation instructions for additional details.
- Detail D** **Dry Continuous Connector:** Used to span a corner or traverse a gap, corner, or obstacle in a dry location installation area. For Mud-In applications, the connection is located behind the mounting surface, such as drywall.
- Detail E** **Wet Continuous Connector:** Used to span a corner or traverse a gap, corner, or obstacle in a wet location installation area. For Mud-In applications, the connection is located behind the mounting surface.

Note: Drawings not to scale. Product may differ from examples shown.

1170 N Red Gum St, Anaheim, CA 92806

aluz.lighting | info@aluz.lighting | 866.ALUZ.LTG | 714.535.7900

© ALUZ All Rights Reserved. ALUZ reserves the right to make changes or withdraw specifications without prior notice.

Specification Submittal

Page 4 of 4

5 / 21 / 2024 / Rev 14