

MODEL NO.	TYPE	PROJECT/DATE
-----------	------	--------------

KEY FEATURES

- Elegantly designed with visual-comfortable illumination performance
- Type III and V distribution with dark sky compliant option
- Optional -20°C emergency battery backup driver
- IK08 vandal resistant lens and housing

TECHNICAL SUMMARY

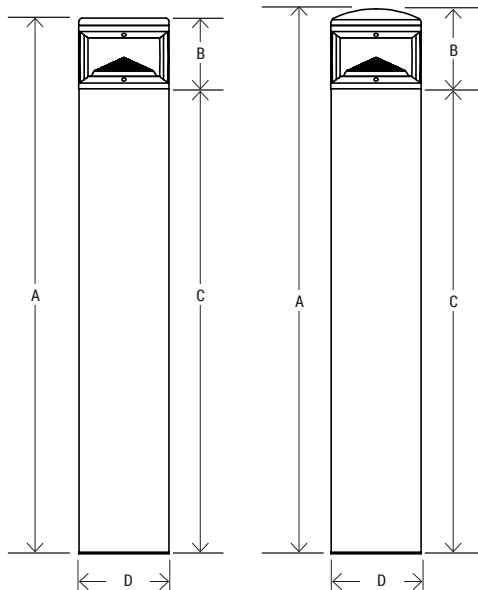
SIZE:	24" and 42" Overall height
WATTAGE:	30/25/18/12W
LUMEN/EFFICACY* (T3/T5)	2500/2100/1500/1000LM, 85LM/W
LUMEN/EFFICACY* (D3/D5)	2400/2000/1400/950LM, 80LM/W
LUMEN/EFFICACY* (G5/L5)	G5: 0.8 multiplier of T3/T5 or D3/D5, L5: 0.4 multiplier of T3/T5 or D3/D5
INPUT VOLTAGE	120-277Vac, 120Vac for GFCI, 277-480Vac
AVAILABLE CCT/CRI	30/40/50K changeable, MTO: 2700K, 3500K, 80+CRI standard
CONTROL	On/off with 0-10V driver no dimming wires, On/Off button photocell optional
VALIDATIONS	ETL and cETL wet location listed, IP65 and IK08 rated, Dark sky compliant (D3/D5 option), FCC, RoHS
LIFETIME	L70>100,000 hours, 5 year warranty
DISTRIBUTION	Type V, Type III, Type V with Louver & Frosted PC Lens optional, Type V with frosted PC Lens optional, House Side Shield optional
OPERATION TEMP.	-40°F ~ 122°F / -4°F ~ 122°F (with EM)
FINISH	Matte Black (BK), Dark Bronze (DB), Silver Gray (SG), Matte White (WH) Premium finish: Pine Green (PG), Corten Brown (CB) Premium Wood finishes: Walnut Wood (dark), Cherry Wood (brown), Oak Wood (light)



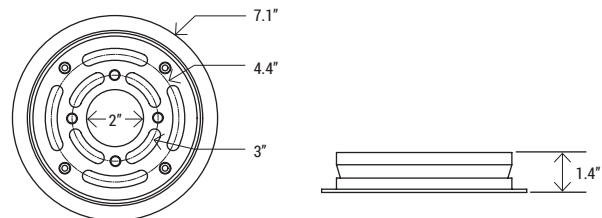
*Delivered lumen may vary, refer to photometric for full performance data



DIMENSIONS



Model No.	A HEIGHT	B HEAD	C BODY	D DIAMETER	WEIGHT
BRA-F24	24"	5.6"	18.4"	7.1"	13 lbs
BRA-C24	24.7"	6.3"	18.4"	7.1"	14 lbs
BRA-F42	42"	5.6"	36.4"	7.1"	18 lbs
BRA-C42	42.7"	6.3"	36.4"	7.1"	19 lbs



BRA

Architectural Round Bollard

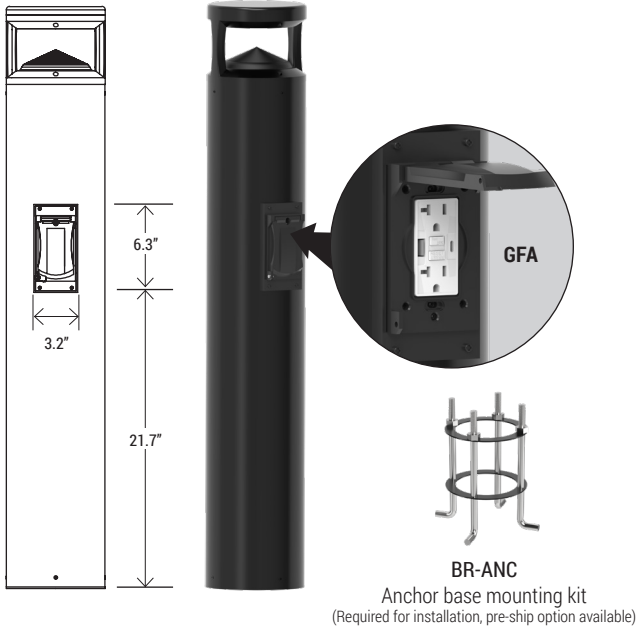
MODEL NO.	TYPE	PROJECT/DATE
-----------	------	--------------

ORDERING INFORMATION

*Additional cost and/or lead time on customized fixtures may apply.

Series	Size	Lumen Package	Input Voltage	CCT	Light Distribution	Control	Finish	EM Option	Wood Body Finish	Misc & Other Options
BRA	F24 - (Flat top 24") C24 - (Curve top 24") F42 - (Flat top 42") C42 - (Curve top 42")	24LC - (2400/2000/1400/ 950LM)	U - (120-277V) H** - (277V-480V)	CC - (30K/40K/50K/Color Changeable - Default 40K) 27K* - (2700K) 35K* - (3500K)	T5 - (Type V) D5* - (0 upright type V) T3 - (Type III) D3* - (0 upright Type III) G5* - (General Type V with frosted PC diffuser) L5* - (General Type V with Louver & frosted PC diffuser)	C1 - (On/off with 0-10V driver no dimming wires) C0P - (On/Off button photocell)	BK - (Matte Black) DB - (Dark Bronze) SG - (Silver Gray) WH - (Matte White) PG - (Pine Green)* CB - (Corten Brown)*	EMC6 - (6W Factory Installed Cold Rated Integrated EM)	WW - (Walnut wood dark finish)* BW - (Cherry wood dark finish)* OW - (Oakwood dark finish)*	GFA - (20amp GFCI with USB Type C) <small>*120Vac only, 42 inch OAH only, C1 only, Wet location rated</small>
			**EM option not available		<small>*Comes with a pitch black cone</small>					

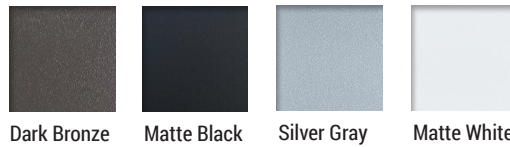
*Available accessories sold separately



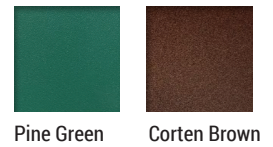
*Accessories

BR-ANC - Anchor base mounting kit (Required for installation, pre-ship option available)

STANDARD COLOR



PREMIUM COLOR



PREMIUM HEAT-TRANSFER WOOD FILM BODY FINISH*



SPECIFICATIONS

CONSTRUCTION

Low copper aluminum alloy die-cast top with extruded aluminum body

FINISH

Exterior parts are protected by a rust and corrosion proof zinc-infused polyester powder coating. T5 and T3 comes with a cone same color as the housing. D5 and D3 comes with a pitch black cone for zero upright.

OPTICS/DIFFUSER

Injection molded optic with UV proof PC lens available in Type III or Type V distribution.

ELECTRICAL

Long life LED system, Outdoor rated LED driver that accommodates input voltages of 120-277Vac or 277-480Vac, at 50/60Hz with 0-10v dimming control function, CCT changeable.

MOUNTING

Anchor based mounting (anchors sold separately)

VALIDATIONS

ETL and cETL wet location Listed, IP65 and IK08 rated, Dark sky compliant optional (D3/D5), FCC, RoHS