

# LW360 SERIES Outdoor Lighting

LW360-120W-30K-G2

LW360-120W-40K-G2

LW360-120W-50K-G2

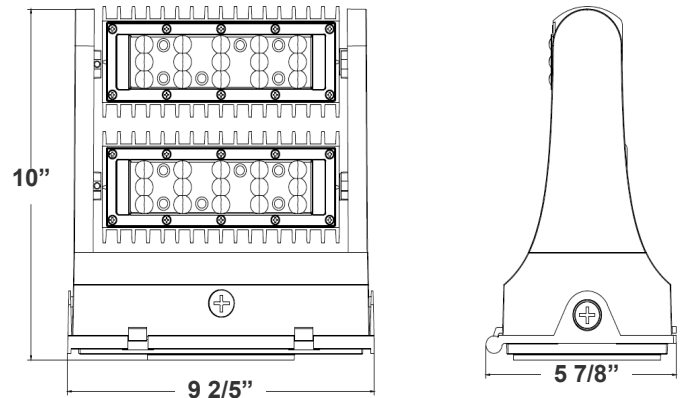
LED 360° ROTATABLE WALL PACK

Customer Name: \_\_\_\_\_

Project Name: \_\_\_\_\_

Note: \_\_\_\_\_

Type: \_\_\_\_\_



10"(H) x 9 2/5"(W) x 5 7/8"(L)

Ideal for general site lighting, alleys, loading docks, doorway, pathway, and parking areas.

## Features

- Rotatable Heads (Both in 60W & 80W) With Set Screw
- Three 1/2" Threaded Knockouts: 1 Bottom. 1 On Each Side
- Light Head rotates 350°
- Die-cast aluminum housing with powder coat finish (Dark Bronze or White)
- 7-Year Warranty

## Technical Specifications

### Electrical:

- Voltage: 120-277V AC 50/60Hzv
- Wattage: 120W
- Power Factor: >0.95
- Efficacy: 130 LPW

### Mechanical:

- Die-Cast Aluminum With Powder Coat Finish (Dark Bronze)
- Light Head rotates 350°
- Includes Mounting Hardware
- Operating Temperature: -40°F -104°F
- Five 1/2" Threaded Knockouts: 1 on Each Side, 1 on The Back
- 7-Year Warranty
- IP65, Suitable for Wet Locations

### Lighting:

- Chip: Philips Lumileds LEDs
- TIR Optic Lens - TYPE II
- Dimmable: 0~10V Dimming
- Total Lumens: 15600LM
- Color Temperatures: 3000K/4000K/5000K
- Color Rendering Index: CRI ≥ 80
- Beam Angle: 60°
- Rated life: 70,000 Hrs

### Applications:

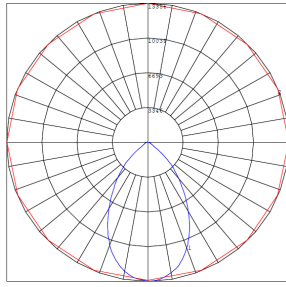
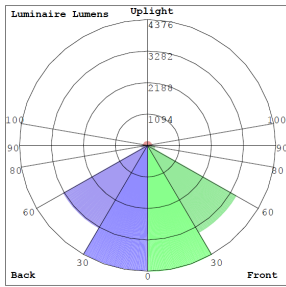
- General site Lighting
- Alleys
- Loading docks
- Doorways
- Pathways
- Parking areas

### Other Models:

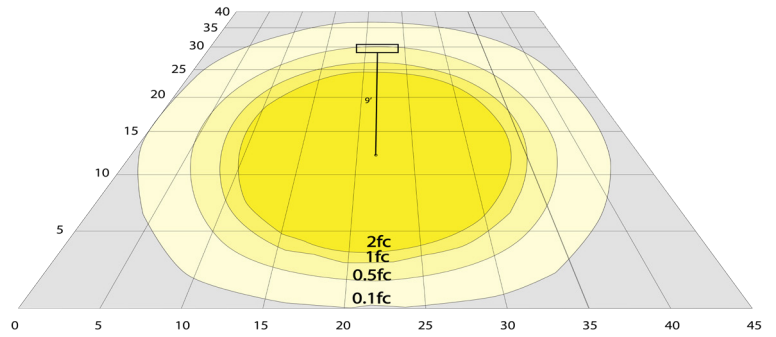
- |                                   |                                   |                                   |                                    |
|-----------------------------------|-----------------------------------|-----------------------------------|------------------------------------|
| • 25W   3250LM   LW360-25W-30K-G2 | • 40W   5200LM   LW360-40W-30K-G2 | • 60W   7800LM   LW360-60W-30K-G2 | • 80W   10400LM   LW360-80W-30K-G2 |
| • 25W   3250LM   LW360-25W-40K-G2 | • 40W   5200LM   LW360-40W-40K-G2 | • 60W   7800LM   LW360-60W-40K-G2 | • 80W   10400LM   LW360-80W-40K-G2 |
| • 25W   3250LM   LW360-25W-50K-G2 | • 40W   5200LM   LW360-40W-50K-G2 | • 60W   7800LM   LW360-60W-50K-G2 | • 80W   10400LM   LW360-80W-50K-G2 |



## Photometrics: LW360-120W



BUG Rating: B4-U3-G1



Area 40'x 45' Mounting Height: 9'

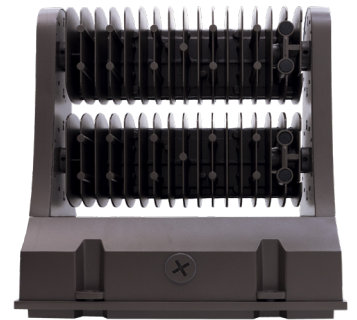
## Other Views:



Side View



Front View



Back View

## Performance Table: LW360-120W

MODEL NO.	Wattage	Voltage	Lumens	Color Temp.	BUG Rating	LPW
LW360-120W-30K-G2 LW360-120W-40K-G2 LW360-120W-50K-G2	120W	120~277V	15600LM	3000K 4000K 5000K	B4-U3-G1	130

## Sample Ordering

Model	Wattage	Color Temp.	Series
LW360	120W	3000K 4000K 5000K	G2

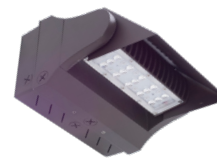
## Accessory:

Blank = No Option For Accessories  
LW360-SH1= SHROUD FOR LW360 SERIES, BRONZE FINISH

## Factory-Installed Options:

Blank = No Option For Accessories  
OPT-EM-LW360-LG= EMERGENCY BACKUP BATTERY, BACK BOX  
OPT-SEN-LW360-3MRLV-5= PROGRAMMABLE MICROWAVE BI-LEVEL  
OPT-CLR-95= COLOR PAINT  
OPT-LW360-PC-B = PHOTOCELL 120-277V  
WEC-8RC = OPTIONAL REMOTE

## ACCESSORY:



LW360-SH1

## FACTORY-INSTALLED OPTIONS:



OPT-EM-LW360-LG



WEC-8RC



OPT-LW360-PC-B



OPT-SEN-LW360-3MRLV-5

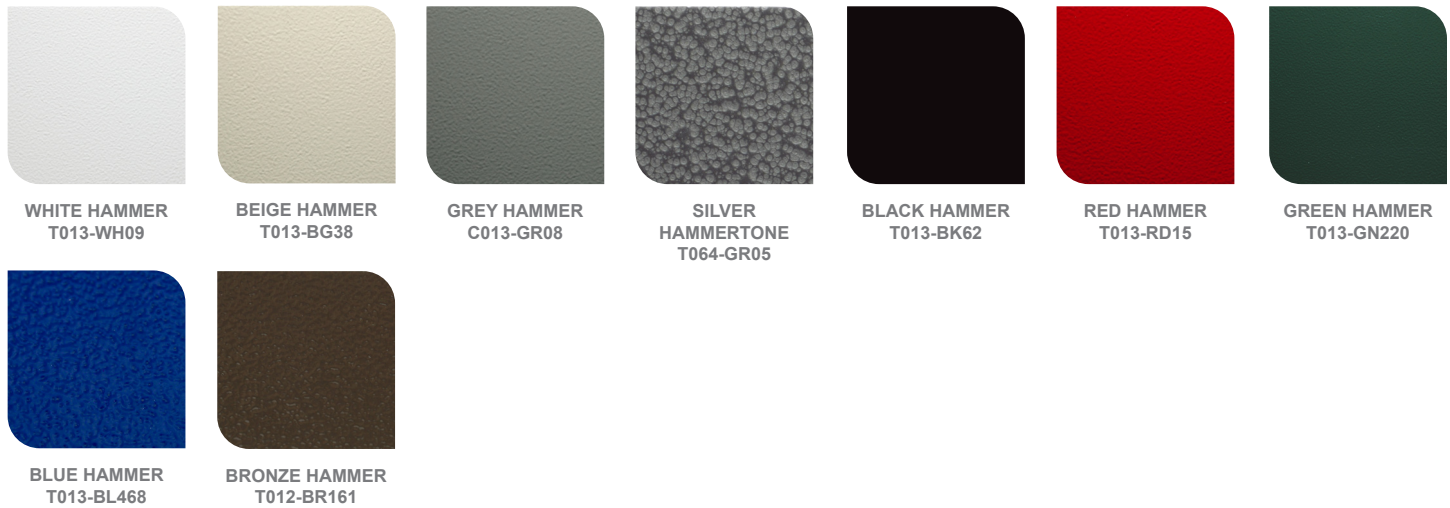


**COLOR CHART:** \* Choose from one of our Premium Colors with no set-up fee.

**Gloss:**



**Hammer:**



**Texture:**



**Vein:**

