

PRODUCT DESCRIPTION

LED flush mount disk lights are designed for installation over junction boxes from below the ceiling. Surface mount downlights are available in Dedicated 3000K or Five Selectable CCTs. Low profile luminaires are perfect solution for closets, storage areas, attics and basements.

FEATURES

- AC LED (No Driver)
- Dedicated 3000K or Five Selectable CCT (2700K/3000K/3500K/4000K/5000K)
- Quick installation and cost savings
- Mounts on standard junction boxes
- cETLus Listed for Wet Locations
- 5-year limited warranty

SPECIFICATION

Construction: One piece aluminum die formed housing and trim. Aluminum body dissipates heat and extends life.

Finish: Electrostatically applied power-coated finish with matte appearance.

Mounting: Surface mount luminaire is compatible with 3" or 4" junction boxes and 1/2" deep pancake boxes for ceiling or wall mount applications.

Ratings: IC rated when used with a 4" electrical junction box rated for direct contact with insulation. Fire rated when used with a fire rated junction box.

ELECTRICAL

Voltage: 120VAC

Lumens / Wattage: Up to 1250lm / 16W

Color Temperature:

Dedicated (3000K) or Five Selectable CCTs (2700K / 3000K / 3500K / 4000K / 5000K: *Preset to 3000K*)

Color Rendering Index: 90+ CRI

Beam Spread: 112° Wide Flood

Operating Temperature: 0°C to 35°C ambient temperature

Lifetime: 50,000 hours @ L70

Dimming: Triac or ELV

[Click Here](#) or check complete dimmer list at www.NoraLighting.com in the "Compatibility" page under "Resources" tab

ACCESSORIES

NEPK-23LEDUNV: 23W Emergency with Remote Test Switch

NEPKA-20/23LEDRTS: Ribbon Test Switch for NEPK-23LEDUNV

NLOPAC-56RECKIT-2: Luminaire can be mounted on 5" or 6" recessed housings using optional retrofit kit.

LABELS AND LISTINGS

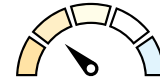
- cETLus Listed for Wet locations
- Certified to the high efficacy requirements of California Title 24 JA8-2025
- Suitable for use in closets when installed in accordance to NEC Section 410.16 (A)(1) and 410.16 (C)(1)
- [5-Year Limited Warranty](#)
- FCC Compliant



Performance Data

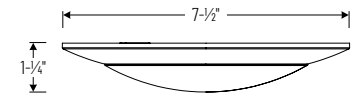
| Part Number | Dedicated | Selectable | CCT |
|-----------------|-----------|------------|-------|
| NCS-D-R6 | - | 1134lm | 2700K |
| NCS-D-R6 | 1213lm | 1189lm | 3000K |
| NCS-D-R6 | - | 1270lm | 3500K |
| NCS-D-R6 | - | 1259lm | 4000K |
| NCS-D-R6 | - | 1181lm | 5000K |

PRODUCT IMAGES AND DIMENSIONS



Selectable CCT

Five position sliding switch
27K / 30K / 35K / 40K / 50K



SOLD IN PACKS OF 12

| CATALOG NUMBER | UPC | CASE QTY. | DESCRIPTION | FINISH | CCT | PALLET QTY. |
|----------------------|--------------|-----------|--|--------|----------------|-------------|
| NCS-D-R630B | 732180817221 | 12 PCS. | 6" LED Flush Mount Disk Light with Dedicated 3000K CCT | Black | 3000K | 104 |
| NCS-D-R630MPW | 732180816897 | 12 PCS. | 6" LED Flush Mount Disk Light with Dedicated 3000K CCT | White | 3000K | 104 |
| NCS-D-R6TWB | 732180817238 | 12 PCS. | 6" LED Flush Mount Disk Light with Selectable CCT | Black | Selectable CCT | 104 |
| NCS-D-R6TWPW | 732180816880 | 12 PCS. | 6" LED Flush Mount Disk Light with Selectable CCT | White | Selectable CCT | 104 |

OPTIONAL ACCESSORIES

| CATALOG NUMBER | UPC | CASE QTY. | DESCRIPTION |
|--------------------------|--------------|-----------|--|
| NEPK-23LEDUNV | 732180780242 | 1 PC. | 23W Emergency LED Driver with Remote Test Switch |
| NEPKA-20/23LEDRTS | 732180681303 | 1 PC. | Ribbon Test Switch for Remote Emergency |
| NLOPAC-56RECKIT-2 | 732180990900 | 1 PC. | Retrofit Kit for 5" or 6" Recessed Housings |

Example: **NCS-D-R6TWPW** = 6" LED Flush Mount Disk Light, Selectable CCT, White Finish (Bulk Pack: 12 Pieces)

NCSD-R6

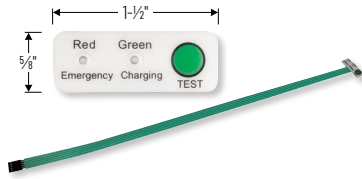
6" LED Flush Mount Disk Light

Type _____
Project _____
Catalog No. _____
Notes _____



23W Emergency LED Driver with Remote Test Switch

NEPK-23LEDUNV
120-277V Emergency LED driver operates luminaire for 90 minute emergency operation with a fully charged battery. Requires 24 hours to charge the battery.



Ribbon Test Switch for NEPK-23LEDUNV

NEPKA-20/23LEDRTS
Ribbon test switch replaces remote test switch included with emergency driver. Double sided tape is pre-installed.



Retrofit Kit for 5" or 6" Recessed Housings

NLOPAC-56RECKIT-2
Allows luminaire to be installed over 5" or 6" recessed housings.

PHOTOMETRICS

6" LED Flush Mount Disk Light with Selectable CCT Contractor Series

Type

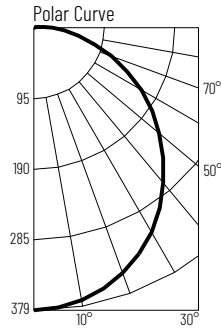
Project

Catalog No.

Notes

Test Information

Test Number: NTR2331R1
 Part Number: NCSD-R6TWMPW
 Beam Spread: 112° Wide Flood
 Lumens: 1134lm
 Wattage: 14.96W
 Efficacy: 76lpw
 CCT / CRI: 2700K / 90 CRI
 Spacing Criteria (0°-180°): 1.24
 Spacing Criteria (90°-270°): 1.24



Illuminance at a Distance

| Distance from Luminaire | FC at Nadir | Beam Diameter |
|-------------------------|-------------|---------------|
| 4' | 23.7fc | 11'-10" |
| 6' | 10.5fc | 17'-8" |
| 8' | 5.9fc | 23'-7" |
| 10' | 3.8fc | 29'-6" |
| 12' | 2.6fc | 35'-5" |

Zonal Lumen Summary

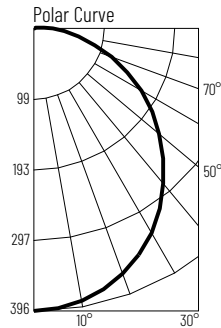
| Zone | Lumens | % Luminaire |
|--------|--------|-------------|
| 0-30 | 293 | 25.8 |
| 0-40 | 478 | 42.1 |
| 0-60 | 842 | 74.2 |
| 0-90 | 1114 | 98.2 |
| 90-180 | 20 | 1.8 |
| 0-180 | 1134 | 100 |

Candela Table

| Vertical Angles | Candela |
|-----------------|---------|
| 0 | 379 |
| 5 | 377 |
| 15 | 363 |
| 25 | 335 |
| 35 | 295 |
| 45 | 246 |

Test Information

Test Number: NTR2332R1
 Part Number: NCSC-R6TWMPW
 Beam Spread: 112° Wide Flood
 Lumens: 1189lm
 Wattage: 15.06W
 Efficacy: 79lpw
 CCT / CRI: 3000K / 90 CRI
 Spacing Criteria (0°-180°): 1.26
 Spacing Criteria (90°-270°): 1.26



Illuminance at a Distance

| Distance from Luminaire | FC at Nadir | Beam Diameter |
|-------------------------|-------------|---------------|
| 4' | 24.8fc | 11'-11" |
| 6' | 11fc | 17'-10" |
| 8' | 6.2fc | 23'-10" |
| 10' | 4fc | 29'-8" |
| 12' | 2.8fc | 35'-8" |

Zonal Lumen Summary

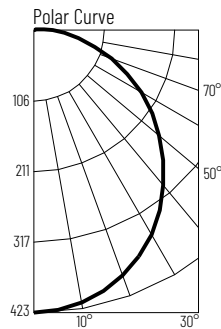
| Zone | Lumens | % Luminaire |
|--------|--------|-------------|
| 0-30 | 306 | 25.7 |
| 0-40 | 500 | 42 |
| 0-60 | 881 | 74.1 |
| 0-90 | 1168 | 98.2 |
| 90-180 | 0 | 0 |
| 0-180 | 1189 | 100 |

Candela Table

| Vertical Angles | Candela |
|-----------------|---------|
| 0 | 396 |
| 5 | 395 |
| 15 | 380 |
| 25 | 352 |
| 35 | 310 |
| 45 | 259 |

Test Information

Test Number: NTR2333R1
 Part Number: NCSC-R6TWMPW
 Beam Spread: 112° Wide Flood
 Lumens: 1270lm
 Wattage: 15.42W
 Efficacy: 82lpw
 CCT / CRI: 3500K / 90 CRI
 Spacing Criteria (0°-180°): 1.26
 Spacing Criteria (90°-270°): 1.26



Illuminance at a Distance

| Distance from Luminaire | FC at Nadir | Beam Diameter |
|-------------------------|-------------|---------------|
| 4' | 26.4fc | 11'-10" |
| 6' | 11.7fc | 17'-10" |
| 8' | 6.6fc | 23'-8" |
| 10' | 4.2fc | 29'-7" |
| 12' | 2.9fc | 35'-6" |

Zonal Lumen Summary

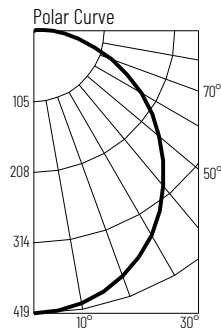
| Zone | Lumens | % Luminaire |
|--------|--------|-------------|
| 0-30 | 327 | 25.7 |
| 0-40 | 533 | 42 |
| 0-60 | 941 | 74.1 |
| 0-90 | 1247 | 98.2 |
| 90-180 | 23 | 1.8 |
| 0-180 | 1270 | 100 |

Candela Table

| Vertical Angles | Candela |
|-----------------|---------|
| 0 | 423 |
| 5 | 421 |
| 15 | 405 |
| 25 | 375 |
| 35 | 330 |
| 45 | 276 |

Test Information

Test Number: NTR2334R1
 Part Number: NCSC-R6TWMPW
 Beam Spread: 112° Wide Flood
 Lumens: 1259lm
 Wattage: 15.25W
 Efficacy: 83lpw
 CCT / CRI: 4000K / 90 CRI
 Spacing Criteria (0°-180°): 1.26
 Spacing Criteria (90°-270°): 1.26



Illuminance at a Distance

| Distance from Luminaire | FC at Nadir | Beam Diameter |
|-------------------------|-------------|---------------|
| 4' | 26.2fc | 11'-10" |
| 6' | 11.6fc | 17'-8" |
| 8' | 6.5fc | 23'-7" |
| 10' | 4.2fc | 29'-5" |
| 12' | 2.9fc | 35'-4" |

Zonal Lumen Summary

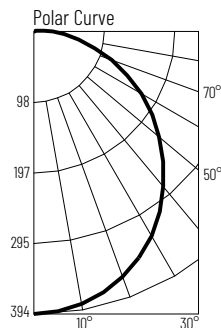
| Zone | Lumens | % Luminaire |
|--------|--------|-------------|
| 0-30 | 324 | 25.7 |
| 0-40 | 528 | 42 |
| 0-60 | 932 | 74.1 |
| 0-90 | 1236 | 98.2 |
| 90-180 | 23 | 1.8 |
| 0-180 | 1259 | 100 |

Candela Table

| Vertical Angles | Candela |
|-----------------|---------|
| 0 | 419 |
| 5 | 416 |
| 15 | 400 |
| 25 | 371 |
| 35 | 327 |
| 45 | 274 |

Test Information

Test Number: NTR2335R1
 Part Number: NCSC-R6TWMPW
 Beam Spread: 112° Wide Flood
 Lumens: 1181lm
 Wattage: 15.02W
 Efficacy: 79lpw
 CCT / CRI: 5000K / 90 CRI
 Spacing Criteria (0°-180°): 1.26
 Spacing Criteria (90°-270°): 1.26



Illuminance at a Distance

| Distance from Luminaire | FC at Nadir | Beam Diameter |
|-------------------------|-------------|---------------|
| 4' | 24.6fc | 11'-8" |
| 6' | 10.9fc | 17'-7" |
| 8' | 6.1fc | 23'-6" |
| 10' | 3.9fc | 29'-4" |
| 12' | 2.7fc | 35'-2" |

Zonal Lumen Summary

| Zone | Lumens | % Luminaire |
|--------|--------|-------------|
| 0-30 | 304 | 25.7 |
| 0-40 | 496 | 42 |
| 0-60 | 875 | 74.1 |
| 0-90 | 1160 | 98.2 |
| 90-180 | 21 | 1.8 |
| 0-180 | 1181 | 100 |

Candela Table

| Vertical Angles | Candela |
|-----------------|---------|
| 0 | 393 |
| 5 | 391 |
| 15 | 375 |
| 25 | 348 |
| 35 | 306 |
| 45 | 256 |

PHOTOMETRICS

6" LED Flush Mount Disk Light with Dedicated 3000K Contractor Series

Type _____

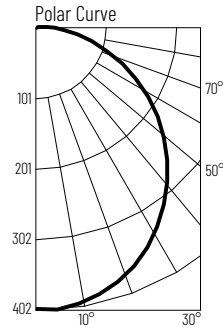
Project _____

Catalog No. _____

Notes _____

Test Information

Test Number: NTR2336R1
 Part Number: NCS-D-R630MPW
 Beam Spread: 112° Wide Flood
 Lumens: 1213lm
 Wattage: 15.58W
 Efficacy: 78lpw
 CCT / CRI: 3000K / 90 CRI
 Spacing Criteria (0°-180°): 1.26
 Spacing Criteria (90°-270°): 1.26



Illuminance at a Distance

| Distance from Luminaire | FC at Nadir | Beam Diameter |
|-------------------------|-------------|---------------|
| 4' | 25fc | 11'-11" |
| 6' | 11.1fc | 17'-11" |
| 8' | 6.3fc | 23'-10" |
| 10' | 4fc | 29'-10" |
| 12' | 2.8fc | 35'-8" |

Zonal Lumen Summary

| Zone | Lumens | % Luminaire |
|--------|--------|-------------|
| 0-30 | 256 | 21.1 |
| 0-40 | 426 | 35.1 |
| 0-60 | 870 | 71.7 |
| 0-90 | 1191 | 98.1 |
| 90-180 | 23 | 1.9 |
| 0-180 | 1213 | 100 |

Candela Table

| Vertical Angles | Candela |
|-----------------|---------|
| 0 | 400 |
| 5 | 398 |
| 15 | 383 |
| 25 | 355 |
| 35 | 314 |
| 45 | 263 |