

# NFRC-R4W1TW / NFRC-R6W1TW

4" & 6" Fire Rated Can-less Flat LED Downlight with Selectable CCT

Listed to UL 263 and ASTM E119 for 2-Hour Fire Rating

Source: 12W or 15W

1200lm or 1550lm

Type

Project

Catalog No.

Notes

## PRODUCT DESCRIPTION

Fire-rated can-less recessed LED downlights are ETL listed, tested and certified to UL 263 & ASTM E119 for 2-hour fire rating.

Wafer design allows luminaires to be installed in shallow plenums and includes a selectable five color temperature switch.

Multi-piece construction provides an extra layer of protection to prevent the spread of fire above the ceiling within a two-hour rating.

## FEATURES

- **ETL Listed and Certified** to UL 263 & ASTM E119 for 2-Hour Fire Rating
- Multi-piece construction provides an extra layer of protection and prevents the spread of fire
- No housing required - IC Air-Tight rated
- Easy installation for remodel or new construction applications
- Quick disconnect for easy installation and wiring
- Delivering up to 1550 lumens
- Five color temperatures in each fixture (2700K / 3000K / 3500K / 4000K / 5000K)
- 120V input; Triac or ELV dimming
- 5-year limited warranty
- cETLus Listed for Wet Locations

## SPECIFICATION

**Construction:** Steel construction with powder coated finish. Luminaire with spring clips for easy installation. Gasket included for air-tight and wet location listing without additional caulking.

**Air Flow Restriction:** Luminaire restricts airflow from room into ceiling plenum to <2CFM (cubic feet per minute) in accordance with ASTM 283 airtight requirements.

**Clearance:** IC rated luminaires are rated for direct contact with insulation (not spray foam insulation), no minimum clearance is required.

**Junction Box:** Pre-wired junction box includes quick connect to LED fixtures for ease of installation. Junction box includes two 1/2" trade size knockouts and snap on cover with 6" quick connect wire. Luminaire includes 10" quick connect wire. Maximum of 4 No. 12 AWG through branch circuit conductor suitable for 75°C permitted in box.

**Mounting:** No housing is required, two tensions steel spring clips secure luminaire to ceiling. Accommodates ceiling thicknesses from 1/2" to 1-1/2". Listed for use in two hour fire-rated ceilings.

## ELECTRICAL

**Input Voltage:** 120VAC

**Lumens / Wattage:** 1200lm / 12W or 1550lm / 15W

**Color Temperature:** Selectable CCT: 2700K / 3000K / 3500K / 4000K / 5000K (Note: Preset to 3000K)

**Color Rendering Index:** 90+ CRI

**Beam Spread:** 110° Wide Flood

**Operating Temperature:** 0-25°C

**Dimming:** Dimmable down to 10% with phase (Triac or ELV dimmer)

[Click Here](#) or check complete dimmer list at [www.Nora-Lighting.com](http://www.Nora-Lighting.com) in the "Compatibility" page under "Resources" tab.

## OPTIONAL ACCESSORIES

**NF-R246:** Universal New Construction Frame-In for 4" & 6"

**NFC-R430:** New Construction Frame-In with Collar for 4"

**NFRC-EW-4:** 4' Extension Cable

**NFRC-EW-20:** 20' Extension Cable

**NEPK-23LEDUNV:** 23W Emergency with Remote Test Switch

**NEPKA-20/23LEDRTS:** Ribbon Test Switch for NEPK-23LEDUNV

**Emergency:** Luminaire is compatible with NEPK-23LEDUNV (ordered separately). Remote mounted battery operates luminaire for 90 minute emergency operation with a fully charged battery. Emergency includes remote test switch, ribbon test switch accessory (NEPKA-20/23LEDRTS) ordered separately.

## LABELS AND LISTINGS

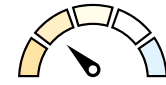
- cETLus Listed to UL 1598, CAN/CSA C22.2, & Wet Locations
- [cETLus Listed and Certified for 2-Hour Fire Rating to UL 263, ASTM E119, & CAN/ULC S101](#)
- [5-Year Limited Warranty](#)
- Certified to the high efficacy requirements of California Title 24 JA8-2022



## Performance Data

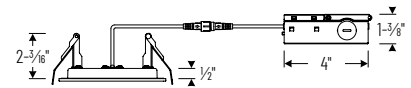
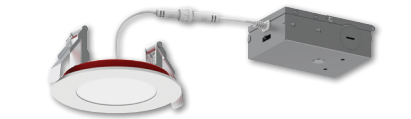
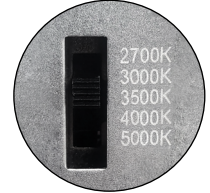
Part Number	4" Lumens	6" Lumens	CCT
NFRC-RXW1TW	1130lm	1428lm	2700K
NFRC-RXW1TW	1168lm	1466lm	3000K
NFRC-RXW1TW	1211lm	1522lm	3500K
NFRC-RXW1TW	1231lm	1566lm	4000K
NFRC-RXW1TW	1219lm	1568lm	5000K

## PRODUCT IMAGES AND DIMENSIONS

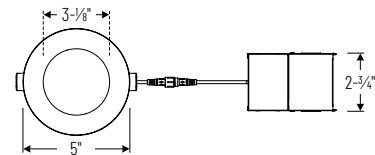


### Selectable CCT

Five position sliding switch  
27K / 30K / 35K / 40K / 50K

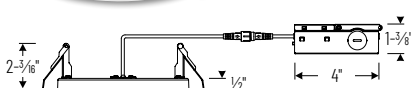


Cut out: 4-5/8"

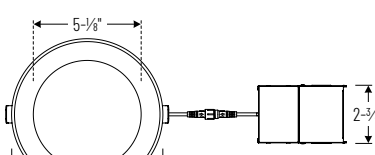


### NFRC-R4W1TWMPW

4" Fire Rated Can-less Flat Downlight



Cut out: 6-5/8"



### NFRC-R6W1TWMPW

6" Fire Rated Can-less Flat Downlight

## 4" & 6" Fire Rated Can-less Flat LED Downlight with Selectable CCT

### Description

**NFRC-R4W1TWMPW** = 4" Flat LED Downlight with Selectable CCT, 1200lm / 12W, Matte Powder White Finish

**NFRC-R6W1TWMPW** = 6" Flat LED Downlight with Selectable CCT, 1550lm / 15W, Matte Powder White Finish

## Optional Accessories

### Description

**NF-R246** = Universal New Construction Frame-In for 4" & 6"

**NFC-R430** = New Construction Frame-In with Collar for 4"

**NFRC-EW-4** = 4' Extension Cable

**NFRC-EW-20** = 20' Extension Cable

**NEPK-23LEDUNV** = 23W Emergency LED Driver w/ Remote Test Switch

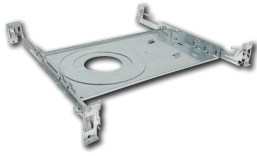
**NEPKA-20/23LEDRTS** = Ribbon Test Switch for NEPK-23LEDUNV

Example: **NFRC-R6W1TWMPW** = 6" Fire Rated Can-less Flat LED Downlight with Selectable CCT, 1550lm / 15W, Matte Powder White Finish

# NFRC-R4W1TW / NFRC-R6W1TW

4" & 6" Fire Rated Can-less Flat LED Downlight with Selectable CCT Accessories

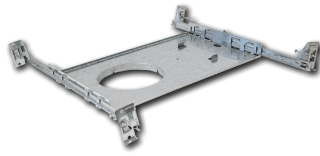
Type	_____
Project	_____
Catalog No.	_____
Notes	_____



Universal New Construction Frame-In for 4" & 6" Downlights

**NF-R246**

New construction frame-in can be used to assist installing can-less recessed downlighting. Helps indicate wiring location and cutting guide.



New Construction Frame-In with Collar for 4" Downlight

**NFC-R430**

New construction frame-in can be used to assist installing can-less recessed downlighting.



Quick Connect Extension Linkable Cables for 4" Downlight

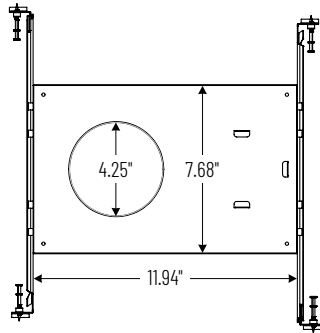
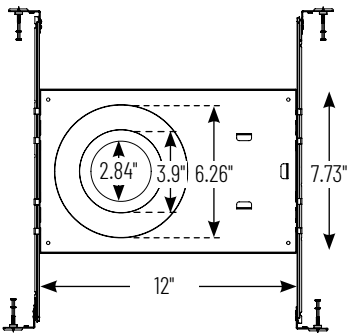
**NFRC-EW-4**

4' Cable

**NFRC-EW-20**

20' Cable

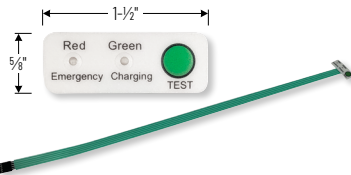
Use to extend the length between luminaire and driver enclosure. Can be connected together to create custom lengths. Maximum length between luminaire and driver is 40'. For longer remote driver remote run length, consult factory.



23W Emergency LED Driver with Remote Test Switch

**NEPK-23LEDUNV**

120-277V Emergency LED driver operates luminaire for 90 minute emergency operation with a fully charged battery. Requires 24 hours to charge the battery.



Ribbon Test Switch for NEPK-23LEDUNV

**NEPKA-20/23LEDRTS**

Ribbon test switch replaces remote test switch included with emergency driver. Double sided tape is pre-installed.

# PHOTOMETRICS

## 4" Fire Rated Can-less Flat LED Downlight with Selectable CCT

Type

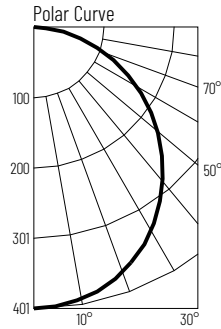
Project

Catalog No.

Notes

### Test Information

Test Number: NTRA2676R2  
 Part Number: NFRC-R4WITWMPW  
 Beam Spread: 110° Wide Flood  
 Lumens: 1130lm  
 Wattage: 11.83W  
 Efficacy: 96lpw  
 CCT / CRI: 2700K / 90 CRI  
 Spacing Criteria (0°-180°): 1.26  
 Spacing Criteria (90°-270°): 1.26



### Illuminance at a Distance

Distance from Luminaire	FC at Nadir	Beam Diameter
4'	25fc	11'-6"
6'	11.1fc	17'-4"
8'	6.3fc	23'
10'	4fc	28'-10"
12'	2.8fc	34'-6"

### Zonal Lumen Summary

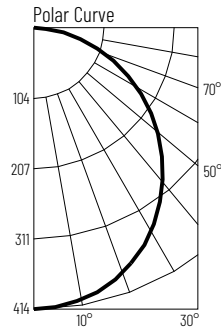
Zone	Lumens	% Luminaire
0-30	256	22.7
0-40	425	37.6
0-60	863	76.3
0-90	1130	100
90-180	0	0
0-180	1130	100

### Candela Table

Vertical Angles	Candela
0	401
5	399
15	384
25	357
35	316
45	263

### Test Information

Test Number: NTRA2677R2  
 Part Number: NFRC-R4WITWMPW  
 Beam Spread: 110° Wide Flood  
 Lumens: 1168lm  
 Wattage: 11.83W  
 Efficacy: 99lpw  
 CCT / CRI: 3000K / 90 CRI  
 Spacing Criteria (0°-180°): 1.26  
 Spacing Criteria (90°-270°): 1.26



### Illuminance at a Distance

Distance from Luminaire	FC at Nadir	Beam Diameter
4'	25.9fc	11'-6"
6'	11.5fc	17'-4"
8'	6.5fc	23'
10'	4.1fc	28'-10"
12'	2.9fc	34'-6"

### Zonal Lumen Summary

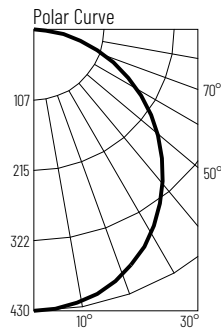
Zone	Lumens	% Luminaire
0-30	265	22.7
0-40	440	37.6
0-60	892	76.3
0-90	1168	100
90-180	0	0
0-180	1168	100

### Candela Table

Vertical Angles	Candela
0	414
5	412
15	397
25	369
35	326
45	272

### Test Information

Test Number: NTRA2678R2  
 Part Number: NFRC-R4WITWMPW  
 Beam Spread: 110° Wide Flood  
 Lumens: 1211lm  
 Wattage: 11.83W  
 Efficacy: 102lpw  
 CCT / CRI: 3500K / 90 CRI  
 Spacing Criteria (0°-180°): 1.26  
 Spacing Criteria (90°-270°): 1.26



### Illuminance at a Distance

Distance from Luminaire	FC at Nadir	Beam Diameter
4'	26.8fc	11'-6"
6'	11.9fc	17'-4"
8'	6.7fc	23'
10'	4.3fc	28'-10"
12'	3fc	34'-6"

### Zonal Lumen Summary

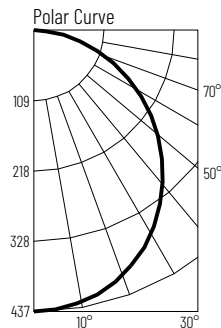
Zone	Lumens	% Luminaire
0-30	275	22.7
0-40	456	37.6
0-60	925	76.3
0-90	1211	100
90-180	0	0
0-180	1211	100

### Candela Table

Vertical Angles	Candela
0	429
5	427
15	412
25	382
35	339
45	282

### Test Information

Test Number: NTRA2679R2  
 Part Number: NFRC-R4WITWMPW  
 Beam Spread: 110° Wide Flood  
 Lumens: 1231lm  
 Wattage: 11.83W  
 Efficacy: 104lpw  
 CCT / CRI: 4000K / 90 CRI  
 Spacing Criteria (0°-180°): 1.26  
 Spacing Criteria (90°-270°): 1.26



### Illuminance at a Distance

Distance from Luminaire	FC at Nadir	Beam Diameter
4'	27.3fc	11'-6"
6'	12.1fc	17'-4"
8'	6.8fc	23'
10'	4.4fc	28'-10"
12'	3fc	34'-6"

### Zonal Lumen Summary

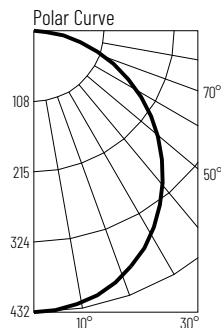
Zone	Lumens	% Luminaire
0-30	279	22.7
0-40	463	37.6
0-60	940	76.3
0-90	1231	100
90-180	0	0
0-180	1231	100

### Candela Table

Vertical Angles	Candela
0	437
5	434
15	418
25	389
35	344
45	287

### Test Information

Test Number: NTRA2680R2  
 Part Number: NFRC-R4WITWMPW  
 Beam Spread: 110° Wide Flood  
 Lumens: 1219lm  
 Wattage: 11.83W  
 Efficacy: 103lpw  
 CCT / CRI: 5000K / 90 CRI  
 Spacing Criteria (0°-180°): 1.26  
 Spacing Criteria (90°-270°): 1.26



### Illuminance at a Distance

Distance from Luminaire	FC at Nadir	Beam Diameter
4'	27fc	11'-6"
6'	12fc	17'-4"
8'	6.8fc	23'
10'	4.3fc	28'-10"
12'	3fc	34'-6"

### Zonal Lumen Summary

Zone	Lumens	% Luminaire
0-30	276	22.7
0-40	459	37.6
0-60	931	76.3
0-90	1219	100
90-180	0	0
0-180	1219	100

### Candela Table

Vertical Angles	Candela
0	432
5	430
15	414
25	385
35	341
45	284

# PHOTOMETRICS

## 6" Fire Rated Can-less Flat LED Downlight with Selectable CCT

Type

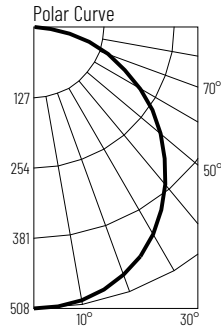
Project

Catalog No.

Notes

### Test Information

Test Number: NTRA2681R2  
 Part Number: NFRC-R6WITWMPW  
 Beam Spread: 110° Wide Flood  
 Lumens: 1428lm  
 Wattage: 14.93W  
 Efficacy: 98lpw  
 CCT / CRI: 2700K / 90 CRI  
 Spacing Criteria (0°-180°): 1.26  
 Spacing Criteria (90°-270°): 1.26



### Illuminance at a Distance

Distance from Luminaire	FC at Nadir	Beam Diameter
4'	31.8fc	11'-6"
6'	14.1fc	17'-4"
8'	7.9fc	23'-1"
10'	5.1fc	28'-10"
12'	3.5fc	34'-7"

### Zonal Lumen Summary

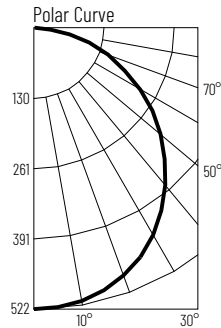
Zone	Lumens	% Luminaire
0-30	393	27.5
0-40	641	44.9
0-60	1123	78.7
0-90	1428	100
90-180	0	0
0-180	1428	100

### Candela Table

Vertical Angles	Candela
0	508
5	503
15	487
25	451
35	398
45	330

### Test Information

Test Number: NTRA2682R2  
 Part Number: NFRC-R6WITWMPW  
 Beam Spread: 110° Wide Flood  
 Lumens: 1466lm  
 Wattage: 14.55W  
 Efficacy: 101lpw  
 CCT / CRI: 3000K / 90 CRI  
 Spacing Criteria (0°-180°): 1.26  
 Spacing Criteria (90°-270°): 1.26



### Illuminance at a Distance

Distance from Luminaire	FC at Nadir	Beam Diameter
4'	32.6fc	11'-6"
6'	14.5fc	17'-4"
8'	8.2fc	23'-1"
10'	5.2fc	28'-10"
12'	3.6fc	34'-7"

### Zonal Lumen Summary

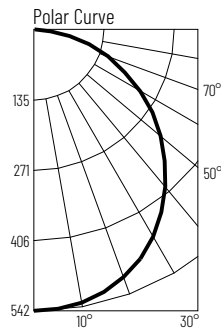
Zone	Lumens	% Luminaire
0-30	403	27.5
0-40	658	44.9
0-60	1153	78.7
0-90	1466	100
90-180	0	0
0-180	1466	100

### Candela Table

Vertical Angles	Candela
0	522
5	516
15	500
25	463
35	408
45	339

### Test Information

Test Number: NTRA2683R2  
 Part Number: NFRC-R6WITWMPW  
 Beam Spread: 110° Wide Flood  
 Lumens: 1522lm  
 Wattage: 14.55W  
 Efficacy: 105lpw  
 CCT / CRI: 3500K / 90 CRI  
 Spacing Criteria (0°-180°): 1.26  
 Spacing Criteria (90°-270°): 1.26



### Illuminance at a Distance

Distance from Luminaire	FC at Nadir	Beam Diameter
4'	33.8fc	11'-6"
6'	15fc	17'-4"
8'	8.5fc	23'-1"
10'	5.4fc	28'-10"
12'	3.8fc	34'-7"

### Zonal Lumen Summary

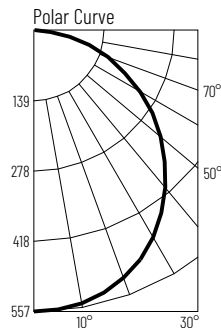
Zone	Lumens	% Luminaire
0-30	419	27.5
0-40	683	44.9
0-60	1197	78.7
0-90	1522	100
90-180	0	0
0-180	1522	100

### Candela Table

Vertical Angles	Candela
0	542
5	536
15	519
25	480
35	424
45	352

### Test Information

Test Number: NTRA2684R2  
 Part Number: NFRC-R6WITWMPW  
 Beam Spread: 110° Wide Flood  
 Lumens: 1566lm  
 Wattage: 14.55W  
 Efficacy: 108lpw  
 CCT / CRI: 4000K / 90 CRI  
 Spacing Criteria (0°-180°): 1.26  
 Spacing Criteria (90°-270°): 1.26



### Illuminance at a Distance

Distance from Luminaire	FC at Nadir	Beam Diameter
4'	34.8fc	11'-6"
6'	15.5fc	17'-4"
8'	8.7fc	23'-1"
10'	5.6fc	28'-10"
12'	3.9fc	34'-7"

### Zonal Lumen Summary

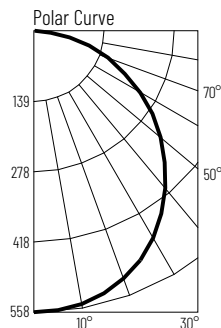
Zone	Lumens	% Luminaire
0-30	431	27.5
0-40	703	44.9
0-60	1232	78.7
0-90	1566	100
90-180	0	0
0-180	1566	100

### Candela Table

Vertical Angles	Candela
0	557
5	551
15	534
25	494
35	436
45	362

### Test Information

Test Number: NTRA2685R2  
 Part Number: NFRC-R6WITWMPW  
 Beam Spread: 110° Wide Flood  
 Lumens: 1568lm  
 Wattage: 14.55W  
 Efficacy: 108lpw  
 CCT / CRI: 5000K / 90 CRI  
 Spacing Criteria (0°-180°): 1.26  
 Spacing Criteria (90°-270°): 1.26



### Illuminance at a Distance

Distance from Luminaire	FC at Nadir	Beam Diameter
4'	34.9fc	11'-6"
6'	15.5fc	17'-4"
8'	8.7fc	23'-1"
10'	5.6fc	28'-10"
12'	3.9fc	34'-7"

### Zonal Lumen Summary

Zone	Lumens	% Luminaire
0-30	432	27.5
0-40	704	44.9
0-60	1233	78.7
0-90	1568	100
90-180	0	0
0-180	1568	100

### Candela Table

Vertical Angles	Candela
0	558
5	552
15	535
25	495
35	437
45	362