

# NHIC-6LMRAT

## 6" IC Air-Tight LED Dedicated New Construction Housing (Compatible with Cobalt, Marquise, Onyx and Pearl)

Type	
Project	
Catalog No.	
Notes	

### PRODUCT DESCRIPTION

Dedicated new construction housing for use in insulated ceilings can be in direct contact with insulation. Air-tight construction provides energy savings by reducing the flow of air through the ceiling. The housing is dedicated and labeled for use with LED retrofit luminaires.

### FEATURES

- IC Air-Tight energy saving by reducing the flow of air through the ceiling
- Rated for direct contact with insulation
- cULus listed for damp location and through branch circuit wiring

### CONSTRUCTION

**Plaster Frame:** High quality 0.04" steel die cut one piece frame.

**Housing:** 0.040 galvanized steel housing with riveted cap adjusts for ceiling thicknesses from 5/8" to 1-1/4". Spring brackets accept torsion wing trim springs; slots on socket plate surface accept standard coil springs.

**Air Flow Restriction:** Housing has factory installed gaskets to restrict airflow from room into ceiling plenum to <2CFM (cubic feet per minute) in accordance to ASTM 283.

**Clearance:** "IC" Insulated ceiling housings are direct contact rated. Not to be used in direct contact with spray foam insulation.

**Bar Hangers:** Two 13-3/4" to 24-1/2" adjustable bar hangers with captive nails are included on frame. Bar hangers are parallel to junction box, but can be repositioned 90° perpendicular to junction box if desired. "L" Shaped bar hanger foot to align to bottom of construction joist. A T-Bar notch allow for easy installation in a suspended ceiling.

**Junction Box:** Prewired 25 cubic inch 0.064" thick galvanized steel box with six 1/2" trade size knockouts and hinged junction box door. All leads are #18AWG wire, the ground wire is connected to the bottom, and quick connectors are supplied on all leads. Maximum of 8 no. 12 AWG through branch circuit conductors suitable for at least 90°C permitted in junction box.

**Romex Strain Relief:** Junction box includes two Romex tabs with two slots at each tab for NM-cables of 12/2 to 14/2. The strain relief allows for easy installation and less materials.

### ELECTRICAL

- Input Voltage:** 120/277V or 277V (must specify)
- Socket:** Quick connect for LED downlights
- Operating Temperature:** 122°F (50°C) max.
- Dimming:** Specified by downlight

### COMPATIBILITY

- [NLCBC-669:](#) 6" Cobalt Adjustable Downlight
- [NLCBC2-6:](#) 6" Cobalt Click Downlights
- [NOX-56 / NOXAC-56 / NOXTW-56:](#) 5"/6" Onyx Downlights
- [NOXAC-636:](#) 6" AC Onyx Square Reflector
- [NPR-56:](#) 5"/6" Pearl Downlights
- [NRM3-61:](#) 6" Marquise III Reflector
- [NRM3-62:](#) 6" Marquise III Baffle

### Step Down Transformer (converts 277V input to 120V):

Optional 50W step down transformer installed (NHIC-6LMRAT/277). Maximum of 6 no. 12 AWG through branch circuit conductors in junction box.

**Emergency:** Housing can be specified with an emergency battery installed on frame (Cobalt only). Requires top access.

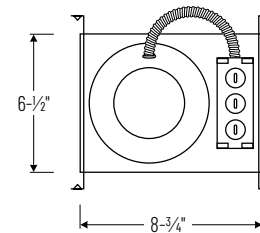
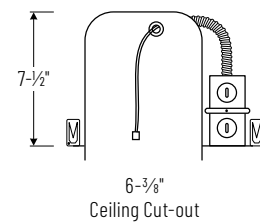
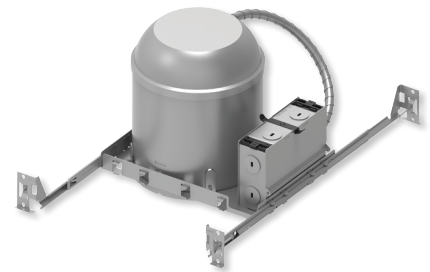
- Up to 7.5W emergency illumination with LEDs
- Illumination Time: 90min
- Voltage: 120/277 VAC, 60Hz
- Output Voltage: 15.0-50.0 VDC
- Remote test switch included

### LABELS AND LISTINGS

- cULus or cETLus Listed for Damp Location (wet location when used with compatible downlights)
- Airtight in accordance to ASTM 283
- Certified to the high efficacy requirements of California Title 24 JA8-2022 (when used with compatible downlight)
- RoHS compliant



### PRODUCT IMAGES & DIMENSIONS



## 6" IC Air-Tight LED Dedicated New Construction Housing

Catalog No.

- **NHIC-6LMRAT** = 6" IC Air-Tight Housing, 120/277V input (120V Triac/ELV dimming)
- **NHIC-6LMRAT/277** = 6" IC Air-Tight Housing, 277V input with 50W Step Down Transformer
- **NHIC-6LMRAT/EM** = 6" IC Air-Tight Housing with Emergency Battery and Remote Test Switch, 120/277V input (Cobalt only - EM required)
- **NHIC-6LMRAT/277EM** = 6" IC Air-Tight Housing with Emergency Battery and Remote Test Switch, 277V input with 50W Step Down Transformer (Cobalt only - EM required)
- **NHIC-6LMRAT/4W** = 6" IC Air-Tight Housing, 120/277V input (120V Triac/ELV/0-10V & 277V 0-10V dimming, Cobalt only - LE4 required)
- **NHIC-6LMRAT/6WEM** = 6" IC Air-Tight Housing with Emergency Battery and Remote Test Switch, 120/277V input (120V Triac/ELV/0-10V & 277V 0-10V dimming, Cobalt only - LE4EM required)

Example: **NHIC-6LMRAT** = 6" IC Air-Tight LED Dedicated New Construction Housing, 120/277V input