

NM2-2RDC

2" M2 Round Can-less LED Recessed Downlight

Source: 6W to 10W LED
400lm to 850lm

PRODUCT DESCRIPTION

M2 downlight series features quality and convenience with easy installation for insulated or non-insulated applications. Luminaires can be configured into multiple options with trim accessories and produces over 850 lumens.

FEATURES

- No housing required - IC Airtight rated
- Easy installation for remodel or new construction applications
- Variety of trim accessories to configure desired appearance
- Quick disconnect allows for extended lengths
- 400lm, 600lm or 850lm LED packages
- 2700K, 3000K or 4000K @ 90+ CRI
- Triac or ELV dimming
- 5-year limited warranty
- cETLus Listed for Wet Locations

SPECIFICATION

Construction: Die-cast aluminum trims with a powder-coated finish. Open downlight includes a reflector with the same finish as trim; optional field changeable accessories are available; square trim, pinhole trim, wall wash trim, reflector inserts or baffle inserts.

Air Flow Restriction: Luminaire has factory installed gasket to restrict airflow from room into ceiling plenum to <2CFM (cubic feet per minute) in accordance with ASTM 283 airtight requirements.

Clearance: IC rated luminaires are rated for direct contact with insulation (not spray foam insulation), no minimum clearance is required.

Junction Box: Prewired junction box includes quick connect to LED fixtures for ease of installation. Junction box includes two (400lm/600lm) or four (850lm) 1/2" trade size knockouts and snap on cover with 7" quick connect wire. Luminaire includes 5" (400lm/600lm) or 4" (850lm) quick connect wire.

Maximum length between luminaire and driver is 40'. For longer remote driver remote run length, consult factory.

Mounting: No housing is required, two tensions steel spring clips secure luminaire to ceiling. Accommodates ceiling thickness up to 3/4". New construction frame-in kits are available, see accessories.

Trims: M2 series is available in three lumen outputs with LED driver. Round trims can be converted to baffles, pinholes or wall wash in the field with optional trims and inserts.

ELECTRICAL	40	60	85
Input Voltage	120V		
Input Power	6W	8W	10W
Color Temperature	2700K or 3000K	2700K, 3000K, 4000K	
CRI	90+ CRI		
Dimming	Triac / ELV		
Operating Temperature	0°C to 40°C		0°C to 25°C
Beam Spread	36° Flood		
Lifetime	60,000 hours @ L70		

OPTIONAL TRIM ACCESSORIES

NM2-2REFL: Reflector Insert for NM2-2RDC, Black or Haze
NM2-2BAF: Baffle Insert for NM2-2RDC, Black or White
NM2-2RPH: Round Pinhole Trim for NM2-2RDC, Black or White
NM2-2RW: Round Wall Wash Trim for NM2-2RDC, Black or White
NM2-2SDT: Square Trim for NM2-2RDC, Black or White

OPTIONAL MOUNTING ACCESSORIES

NM2-MLS1: One Head Multiple Lighting System Plate
NM2-MLS2: Two Head Multiple Lighting System Plate
NM2-MLS3: Three Head Multiple Lighting System Plate
NF-R246: Universal New Construction Frame-In
NFC-R275: New Construction Frame-In with Collar
NM2-EW-4: 4' Quick Connect Linkable Extension Cable
NM2-EW-10: 10' Quick Connect Linkable Extension Cable
NEPK-23LEDUNV: 23W Emergency with Remote Test Switch
NEPKA-20/23LEDRTS: Ribbon Test Switch for NEPK-23LEDUNV

Emergency: Luminaire is compatible with NEPK-23LEDUNV (ordered separately). Remote mounted battery operates luminaire for 90 minute emergency operation with a fully charged battery. Emergency includes remote test switch, ribbon test switch accessory (NEPKA-20/23LEDRTS) ordered separately.

LABELS AND LISTINGS

- cETLus Listed for Wet Locations
- [5-Year Limited Warranty](#)
- FCC compliant
- Certified to the high efficacy requirements of California Title 24 JA8-2025



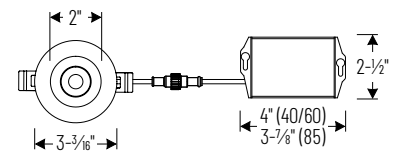
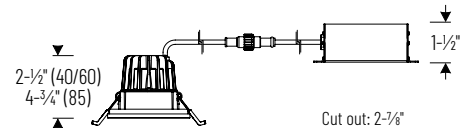
Type	
Project	
Catalog No.	
Notes	

PRODUCT IMAGES AND DIMENSIONS

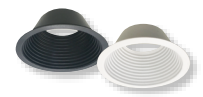


NM2-2RDCXXBB
400lm or 600lm
Black Finish

NM2-2RDC85XXMPW
850lm
White Finish



NM2-2REFL
Reflector Insert



NM2-2BAF
Baffle Insert



NM2-2RPH
Round Pinhole Trim



NM2-2RW
Round Wall Wash Trim



NM2-2SDT
Square Trim



NM2-EW
Extension Cables

2" M2 Round Can-less LED Recessed Downlight

Lumens / Wattage	Color Temperature	Finish
■ NM2-2RDC40 = 400lm / 6W	■ 27 = 2700K	■ BB = Black
	■ 30 = 3000K	■ MPW = White
■ NM2-2RDC60 = 600lm / 8W	■ 27 = 2700K	■ BB = Black
	■ 30 = 3000K	■ MPW = White
■ NM2-2RDC85 = 850lm / 10W	■ 30 = 3000K	■ MPW = White
	■ 40 = 4000K	

Note:

¹ 4000K available in black finish only

M2 Trim Accessories

Accessory Type	Finish
■ NM2-2REFL = Reflector for NM2-2RDC	■ B = Black ■ HZ = Haze
■ NM2-2BAF = Baffle for NM2-2RDC	■ B = Black
■ NM2-2RPH = Round Pinhole Trim for NM2-2RDC	■ MPW = White
■ NM2-2RW = Round Wall Wash Trim for NM2-2RDC	
■ NM2-2SDT = Square Trim for NM2-2RDC	

Optional Accessories

Accessory Type	Finish
■ NM2-MLS1 = One Head MLS Plate	■ BB = Black
■ NM2-MLS2 = Two Head MLS Plate	■ MPW = White
■ NM2-MLS3 = Three Head MLS Plate	
■ NF-R246 = Universal New Construction Frame-In	
■ NFC-R275 = New Construction Frame-In with Collar	
■ NM2-EW-4 = 4' Quick Connect Extension Cable	
■ NM2-EW-10 = 10' Quick Connect Extension Cable	
■ NEPK-23LEDUNV = 23W Emergency LED Driver w/ Remote Test Switch	
■ NEPKA-20/23LEDRTS = Ribbon Test Switch for NEPK-23LEDUNV	

Example: **NM2-2RDC6030MPW** = 2" M2 Round Can-less LED Recessed Downlight, 600lm / 8W, 3000K, White Finish

NM2-2RDC

2" M2 Round Can-less LED Recessed Downlight Accessories

Type	
Project	
Catalog No.	
Notes	



Reflector/Baffle Insert for NM2-2RDC

NM2-2REFLB
NM2-2REFLHZ
NM2-2BAFB
NM2-2BAFMPW

Replaces the reflector included with NM2-2RDC downlight

Black Reflector
 Haze Reflector
 Black Baffle
 White Baffle



Multiple Lighting System Plates

NM2-MLS1B
NM2-MLS1MPW
NM2-MLS2B
NM2-MLS2MPW
NM2-MLS3B
NM2-MLS3MPW

Converts multiple round LED luminaires into multiple lighting system without a large housing.

1 Head / Black Finish
 1 Head / White Finish
 2 Head / Black Finish
 2 Head / White Finish
 3 Head / Black Finish
 3 Head / White Finish



Square Trim for NM2-2RDC

NM2-2SDTB
NM2-2SDTMPW

Converts the round trim included with NM2-2RDC downlight into a square trim

Black Finish
 White Finish



Round Pinhole Trim for NM2-2RDC

NM2-2RPHB
NM2-2RPHMPW

Converts the round trim included with NM2-2RDC downlight into a round pinhole

Black Finish
 White Finish

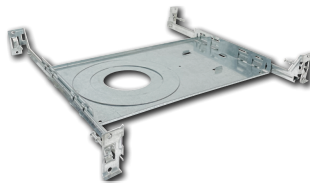


Round Wall Wash Trim for NM2-2RDC

NM2-2RWB
NM2-2RWMPW

Converts the round trim included with NM2-2RDC downlight into a round wall wash

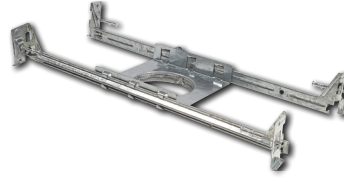
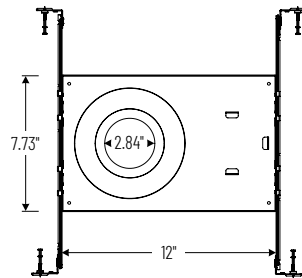
Black Finish
 White Finish



Universal New Construction Frame-In

NF-R246

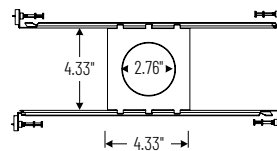
Universal new construction frame-in can be used to assist installing can-less recessed downlighting.



New Construction Frame-In with Collar

NFC-R275

New construction frame-in can be used to assist installing can-less recessed downlighting.



Quick Connect Extension Linkable Cables

NM2-EW-4
NM2-EW-10

Use to extend the length between luminaire and driver enclosure. Can be connected together to create custom lengths. Maximum length between luminaire and driver is 40'. For longer remote driver remote run length, consult factory.

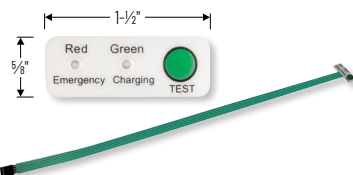
4' Cable
 10' Cable



23W Emergency LED Driver with Remote Test Switch

NEPK-23LEDUNV

120-277V Emergency battery operates luminaire for 90 minute emergency operation with a fully charged battery. Requires 24 hours to charge the battery.



Ribbon Test Switch for NEPK-23LEDUNV

NEPKA-20/23LEDRTS

Ribbon test switch replaces remote test switch included with emergency driver. Double sided tape is pre-installed.

NM2-2RDC
2" M2 Round Can-less LED Recessed Downlight Accessories

Type	
Project	
Catalog No.	
Notes	

Luminaire Examples



PHOTOMETRICS

2" M2 Round Can-less LED Recessed Downlight

Type

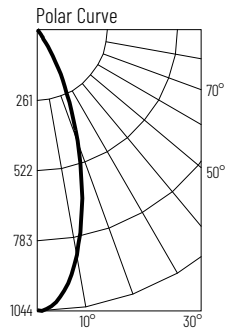
Project

Catalog No.

Notes

Test Information

Test Number: NTR11363
Part Number: NM2-2RDC4027MPW
Beam Spread: 36° Flood
Lumens: 445lm
Wattage: 6.2W
Efficacy: 72lpw
CCT / CRI: 2700K / 90 CRI
Spacing Criteria (0°-180°): 0.6
Spacing Criteria (90°-270°): 0.6



Illuminance at a Distance

Distance from Luminaire	FC at Nadir	Beam Diameter
2'	261fc	1'-4"
4'	65.3fc	2'-7"
6'	29fc	3'-11"
8'	16.3fc	5'-2"
10'	10.4fc	6'-6"

Zonal Lumen Summary

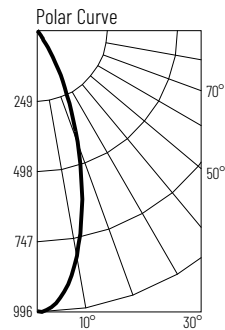
Zone	Lumens	% Luminaire
0-30	387	86.8
0-40	418	93.7
0-60	436	97.9
0-90	443	99.6
90-180	2	0.4
0-180	445	100

Candela Table

Vertical Angles	Candela
0	1044
5	993
15	645
25	264
35	42
45	14

Test Information

Test Number: NTR11350
Part Number: NM2-2RDC4030MPW
Beam Spread: 37° Flood
Lumens: 464lm
Wattage: 6.23W
Efficacy: 75lpw
CCT / CRI: 3000K / 90 CRI
Spacing Criteria (0°-180°): 0.62
Spacing Criteria (90°-270°): 0.62



Illuminance at a Distance

Distance from Luminaire	FC at Nadir	Beam Diameter
2'	248fc	1'-4"
4'	61.9fc	2'-8"
6'	27.5fc	4'
8'	15.5fc	5'-5"
10'	9.9fc	6'-8"

Zonal Lumen Summary

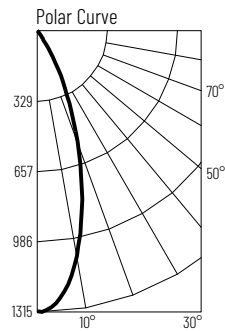
Zone	Lumens	% Luminaire
0-30	393	84.7
0-40	434	93.5
0-60	455	98
0-90	464	99.9
90-180	1	0.1
0-180	464	100

Candela Table

Vertical Angles	Candela
0	990
5	950
15	639
25	272
35	51
45	15

Test Information

Test Number: NTR11351
Part Number: NM2-2RDC6027MPW
Beam Spread: 37° Flood
Lumens: 594lm
Wattage: 7.8W
Efficacy: 76lpw
CCT / CRI: 2700K / 90 CRI
Spacing Criteria (0°-180°): 0.62
Spacing Criteria (90°-270°): 0.6



Illuminance at a Distance

Distance from Luminaire	FC at Nadir	Beam Diameter
2'	327fc	1'-4"
4'	81.9fc	2'-8"
6'	36.4fc	4'
8'	20.5fc	5'-5"
10'	13.1fc	6'-8"

Zonal Lumen Summary

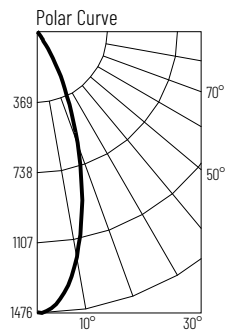
Zone	Lumens	% Luminaire
0-30	505	85
0-40	557	93.7
0-60	582	97.9
0-90	593	99.8
90-180	1	0.2
0-180	594	100

Candela Table

Vertical Angles	Candela
0	1310
5	1251
15	847
25	359
35	85
45	19

Test Information

Test Number: NTR11351
Part Number: NM2-2RDC6030MPW
Beam Spread: 36° Flood
Lumens: 641lm
Wattage: 8.1W
Efficacy: 79lpw
CCT / CRI: 3000K / 90 CRI
Spacing Criteria (0°-180°): 0.6
Spacing Criteria (90°-270°): 0.6



Illuminance at a Distance

Distance from Luminaire	FC at Nadir	Beam Diameter
2'	368fc	1'-4"
4'	92.1fc	2'-7"
6'	40.9fc	3'-11"
8'	23fc	5'-2"
10'	14.7fc	6'-6"

Zonal Lumen Summary

Zone	Lumens	% Luminaire
0-30	547	85.4
0-40	597	93.2
0-60	626	97.8
0-90	639	99.8
90-180	1	0.2
0-180	641	100

Candela Table

Vertical Angles	Candela
0	1473
5	1403
15	909
25	372
35	67
45	21

PHOTOMETRICS

2" M2 Round Can-less LED Recessed Downlight

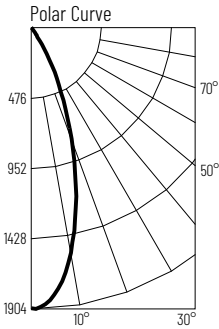
Type

Project

Catalog No.

Notes

Test Information
Test Number: NTR1431
Part Number: NM2-2RDC8530MPW
Beam Spread: 38° Flood
Lumens: 882lm
Wattage: 10.18W
Efficacy: 87lpw
CCT / CRI: 3000K / 90 CRI
Spacing Criteria (0°-180°): 0.62
Spacing Criteria (90°-270°): 0.62



Illuminance at a Distance		
Distance from Luminaire	FC at Nadir	Beam Diameter
2'	476fc	1'-5"
4'	119fc	2'-8"
6'	52.9fc	4'-1"
8'	29.7fc	5'-6"
10'	19fc	6'-11"

Zonal Lumen Summary			Candela Table	
Zone	Lumens	% Luminaire	Vertical Angles	Candela
0-30	757	85.9	0	1904
0-40	824	93.4	5	1824
0-60	864	98	15	1246
0-90	880	99.8	25	540
90-180	2	0.2	35	88
0-180	882	100	45	27