

NM4-RDC

4" M4 Round LED Recessed Downlight

Source: 15W LED
1100lm

Type	
Project	
Catalog No.	
Notes	

PRODUCT DESCRIPTION

4" M4 Round LED downlight are ideal for remodel or new constructions in residential and light commercial applications. IC Air-Tight rated luminaires require no housing, making installation easy.

FEATURES

- No housing required - IC Airtight rated
- Easy installation for remodel or new construction applications
- Square trim available for an alternative appearance
- Quick disconnect allows for extended lengths
- 2700K or 3000K @ 90+ CRI
- Triac or ELV dimming
- 5-year limited warranty
- cETLus Listed for Wet Locations

SPECIFICATION

Construction: Die-cast aluminum trims with a powder-coated finish. Optional field changeable square trim is available.

Air Flow Restriction: Luminaire has factory installed gasket to restrict airflow from room into ceiling plenum to <2CFM (cubic feet per minute) in accordance with ASTM 283 airtight requirements.

Clearance: IC rated luminaires are rated for direct contact with insulation (not spray foam insulation), no minimum clearance is required.

Junction Box: Prewired junction box includes quick connect to LED fixtures for ease of installation. Junction box includes four 1/2" trade size knockouts and snap on cover with 7" quick connect wire. Luminaire includes 6 1/2" quick connect wire.

Maximum length between luminaire and driver is 40'. For longer remote driver remote run length, consult factory.

Mounting: No housing is required, two tensions steel spring clips secure luminaire to ceiling. Accommodates ceiling thickness up to 3/4". New construction frame-ins are available, see mounting accessories.

ELECTRICAL

Input Voltage: 120V
Lumens / Wattage: 1100lm / 15W
Color Temperature: 2700K or 3000K
Color Rendering Index: 90+ CRI
Beam Spread: 37° Narrow Flood
Operating Temperature: 0°C to 25°C
Lifetime: 50,000 hours @ L70
Dimming: Dimmable down to 10% with Triac or ELV
[Click Here](#) or check complete dimmer list at www.NoraLighting.com in the "Compatibility" page under "Resources" tab

OPTIONAL TRIM ACCESSORIES

NM4-SDT: Square Baffle Trim for NM4-RDC, Black or White

OPTIONAL ACCESSORIES

NFC-R375: New Construction Frame-In with collar
NM2-EW-4: 4' Quick Connect Linkable Extension Cable
NM2-EW-10: 10' Quick Connect Linkable Extension Cable
NEPK-23LEDUNV: 23W Emergency with Remote Test Switch
NEPKA-20/23LEDRTS: Ribbon Test Switch for NEPK-23LEDUNV

Emergency: Luminaire is compatible with NEPK-23LEDUNV (ordered separately). Remote mounted battery operates luminaire for 90 minute emergency operation with a fully charged battery. Emergency includes remote test switch, ribbon test switch accessory (NEPKA-20/23LEDRTS) ordered separately.

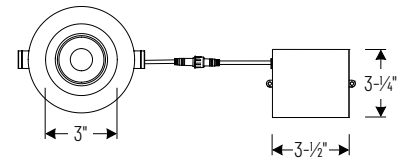
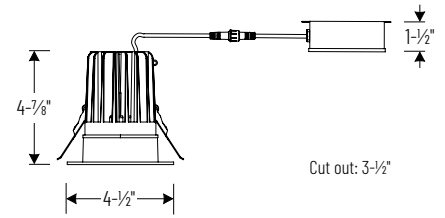
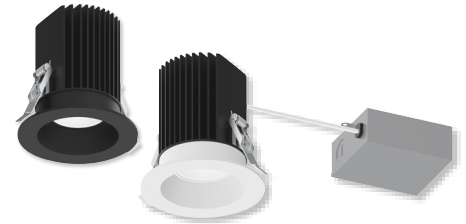
LABELS AND LISTINGS

- cETLus Listed for Wet Locations
- [5-Year Limited Warranty](#)
- FCC compliant
- Certified to the high efficacy requirements of California Title 24 JA8-2025



Performance Data		
Part Number	Lumens	CCT
NM4-RDC27BB	1027lm	2700K
NM4-RDC27MPW	1086lm	2700K
NM4-RDC30BB	1086lm	3000K
NM4-RDC30MPW	1177lm	3000K

PRODUCT IMAGES AND DIMENSIONS



NM4-SDT
Square Baffle Trim

4" M4 Round Can-less LED Recessed Downlight

Color Temperature	Finish
NM4-RDC27 = 2700K	BB = Black
NM4-RDC30 = 3000K	MPW = White

Square Trim Accessory

Description
NM4-SDTB = Square Baffle Trim, Black Finish
NM4-SDTMPW = Square Baffle Trim, White Finish

Optional Mounting Accessories

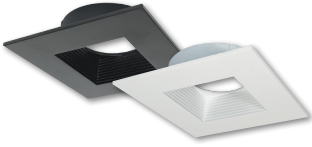
Accessory Type
NFC-R375 = New Construction Frame-In with collar
NM2-EW-4 = 4' Quick Connect Extension Cable
NM2-EW-10 = 10' Quick Connect Extension Cable
NEPK-23LEDUNV = 23W Emergency LED Driver w/ Remote Test Switch
NEPKA-20/23LEDRTS = Ribbon Test Switch for NEPK-23LEDUNV

Example: NM4-RDC30MPW = 4" M4 Round Can-less LED Recessed Downlight, 1100lm / 15W, 3000K, White Finish

NM4-RDC

4" M4 Round Can-less LED Recessed Downlight Accessories

Type	
Project	
Catalog No.	
Notes	

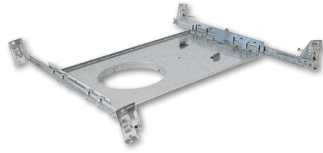


Square Trim for NM4-RDC

NM4-SDTB NM4-SDTMPW

Converts the round trim included with NM4-RDC downlight into a square trim

Black Finish
White Finish



New Construction Frame-In with Collar

NFC-R375

For new construction pre-wiring and easier layout planning.

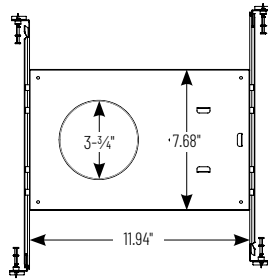


Quick Connect Extension Linkable Cables

NM2-EW-4 NM2-EW-10

4' Cable
10' Cable

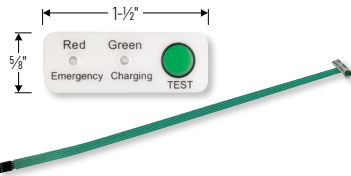
Use to extend the length between luminaire and driver enclosure. Can be connected together to create custom lengths. Maximum length between luminaire and driver is 40'. For longer remote driver remote run length, consult factory.



23W Emergency LED Driver with Remote Test Switch

NEPK-23LEDUNV

120-277V Emergency battery operates luminaire for 90 minute emergency operation with a fully charged battery. Requires 24 hours to charge the battery.



Ribbon Test Switch for NEPK-23LEDUNV

NEPKA-20/23LEDRTS

Ribbon test switch replaces remote test switch included with emergency driver. Double sided tape is pre-installed.

PHOTOMETRICS

4" M4 Round Can-less LED Recessed Downlight

Type

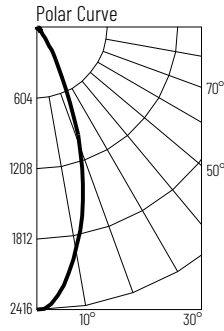
Project

Catalog No.

Notes

Test Information

Test Number: NTR1853R1
 Part Number: NM4-RDC27MPW
 Beam Spread: 36° Narrow Flood
 Lumens: 1086lm
 Wattage: 14.33W
 Efficacy: 76lpw
 CCT / CRI: 2700K / 90 CRI
 Spacing Criteria (0°-180°): 0.60
 Spacing Criteria (90°-270°): 0.58



Illuminance at a Distance

Distance from Luminaire	FC at Nadir	Beam Diameter
4'	151fc	2'-7"
6'	67.1fc	3'-11"
8'	37.8fc	5'-2"
10'	24.2fc	6'-6"
12'	16.8fc	7'-10"

Zonal Lumen Summary

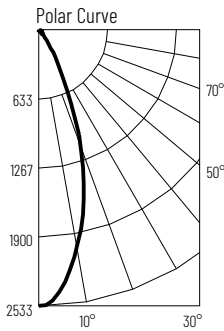
Zone	Lumens	% Luminaire
0-30	884	81.4
0-40	988	90.9
0-60	1061	97.7
0-90	1086	100
90-180	0	0
0-180	1086	100

Candela Table

Vertical Angles	Candela
0	2416
5	2227
15	1481
25	596
35	163
45	48

Test Information

Test Number: NTR1855R1
 Part Number: NM4-RDC30MPW
 Beam Spread: 37° Narrow Flood
 Lumens: 1177lm
 Wattage: 14.41W
 Efficacy: 82lpw
 CCT / CRI: 3000K / 90 CRI
 Spacing Criteria (0°-180°): 0.62
 Spacing Criteria (90°-270°): 0.6



Illuminance at a Distance

Distance from Luminaire	FC at Nadir	Beam Diameter
4'	158fc	2'-8"
6'	70.4fc	4'
8'	39.6fc	5'-5"
10'	25.3fc	6'-8"
12'	17.6fc	8'-1"

Zonal Lumen Summary

Zone	Lumens	% Luminaire
0-30	954	81
0-40	1068	90.8
0-60	1149	97.6
0-90	1177	100
90-180	0	0
0-180	1177	100

Candela Table

Vertical Angles	Candela
0	2533
5	2386
15	1610
25	660
35	187
45	52

Finish Multiplier

Finish: Black (x0.93), White (x1.0)