





**READ AND FOLLOW ALL SAFETY INSTRUCTIONS!
SAVE THESE INSTRUCTIONS AND DELIVER TO OWNER AFTER INSTALLATION**

- To reduce the risk of death, personal injury or property damage from fire, electric shock, falling parts, cuts/abrasions, and other hazards please read all warnings and instructions included with and on the fixture box and all fixture labels.
- Before installing, servicing, or performing routine maintenance upon this equipment, follow these general precautions.
- Installation and service of luminaires should be performed by a qualified licensed electrician.
- Maintenance of the luminaires should be performed by person(s) familiar with the luminaires' construction and operation and any hazards involved. Regular fixture maintenance programs are recommended.
- It will occasionally be necessary to clean the outside of the refractor/lens. Frequency of cleaning will depend on ambient dirt level and minimum light output which is acceptable to user. Refractor/lens should be washed in a solution of warm water and any mild, non-abrasive household detergent, rinsed with clean water and wiped dry. Should optical assembly become dirty on the inside, wipe refractor/lens and clean in above manner, replacing damaged gaskets as necessary.
- **DO NOT INSTALL DAMAGED PRODUCT!** This luminaire has been properly packed so that no parts should have been damaged during transit. Inspect to confirm. Any part damaged or broken during or after assembly should be replaced.
- **Recycle:** For information on how to recycle LED electronic products, please visit www.epa.gov.
- These instructions do not purport to cover all details or variations in equipment nor to provide every possible contingency to meet in connection with installation, operation, or maintenance. Should further information be desired or should particular problems arise which are not covered sufficiently for the purchaser's or owner's purposes, this matter should be referred to Acuity Brands Lighting, Inc.

<div style="text-align: center; border: 1px solid black; padding: 5px; margin-bottom: 10px;">  <p>WARNING RISK OF ELECTRIC SHOCK</p> </div> <ul style="list-style-type: none"> ✓ Disconnect or turn off power before installation or servicing. ✓ Verify that supply voltage is correct by comparing it with the luminaire label information. ✓ Make all electrical and grounded connections in accordance with the National Electrical Code (NEC) and any applicable local code requirements. ✓ All wiring connections should be capped with UL approved recognized wire connectors. 	<div style="text-align: center; border: 1px solid black; padding: 5px; margin-bottom: 10px;">  <p>WARNING RISK OF BURN</p> </div> <ul style="list-style-type: none"> ✓ Allow lamp/fixture to cool before handling. Do not touch enclosure or light source. ✓ Do not exceed maximum wattage marked on luminaire label. ✓ Follow all manufacturer's warnings, recommendations and restrictions for: driver type, burning position, mounting locations/methods, replacement and recycling.
<div style="text-align: center; border: 1px solid black; padding: 5px; margin-bottom: 10px;">  <p>CAUTION RISK OF INJURY</p> </div> <ul style="list-style-type: none"> ✓ Wear gloves and safety glasses at all times when removing luminaire from carton, installing, servicing or performing maintenance. ✓ Avoid direct eye exposure to the light source while it is on. 	<div style="text-align: center; border: 1px solid black; padding: 5px; margin-bottom: 10px;">  <p>CAUTION RISK OF FIRE</p> </div> <ul style="list-style-type: none"> ✓ Keep combustible and other materials that can burn, away from lamp/lens. ✓ Do not operate in close proximity to persons, combustible materials or substances affected by heat or drying.

LED IMPORTANT SAFETY INSTRUCTIONS



CAUTION: RISK OF PRODUCT DAMAGE

- ✓ Never connect components under load.
- ✓ Do not mount or support these fixtures in a manner that can cut the outer jacket or damage wire insulation.
- ✓ Controls for dimming, auto-sensing, or remote control of a luminaire that are not factory-wired to the luminaire must be checked for compatibility with the luminaire prior to installation. LED fixtures must be powered directly off a switched circuit.
- ✓ Unless individual product specifications deem otherwise: Do not restrict fixture ventilation. Allow for some volume of airspace around fixture. Avoid covering LED fixtures with insulation, foam, or other material that will prevent convection or conduction cooling.
- ✓ Unless individual product specifications deem otherwise: Do not exceed fixtures maximum ambient temperature.
- ✓ Only use fixture in its intended location.
- ✓ LED products are Polarity Sensitive. Ensure proper Polarity before installation.
- ✓ Electrostatic Discharge (ESD): ESD can damage LED fixtures. Personal grounding equipment must be worn during all installation or servicing of the unit.
- ✓ Do not touch individual electrical components as this can cause ESD, shorten lamp life, or alter performance.
- ✓ Some components inside the fixture may not be serviceable. In the unlikely event your unit may require service, stop using the unit immediately and contact an ABL representative for assistance.
- ✓ Always read the fixtures complete installation instructions prior to installation for any additional fixture specific warnings.
- ✓ Always ensure that the electrical distribution system is up to NEC (and any applicable local code) requirements.
- ✓ Verify that power distribution system has proper grounding. Lack of proper earth ground can lead to fixture failure and may void warranty.

Please see product specific installation instructions for additional warnings or any applicable FCC or other regulatory statements.

Failure to follow any of these instructions could void product warranties. For a complete listing of product Terms and Conditions, please visit www.acuitybrands.com.

Our Brands	Indoor/Outdoor Lithonia Lighting Carandini Holophane RELOC Light Concepts	Indoor Lighting Gotham Mark Architectural Lighting Peerless Renaissance Lighting Winona Lighting	Outdoor Lighting American Electric Lighting Antique Street Lamps Hydrel Tersen	Controls DARK TO LIGHT LC&D ROAM Sensor Switch Synergy	Daylighting SunOptics
-------------------	---	--	---	--	---------------------------------

Acuity Brands Lighting, Inc. assumes no responsibility for claims arising out of improper or careless installation or handling of its products.

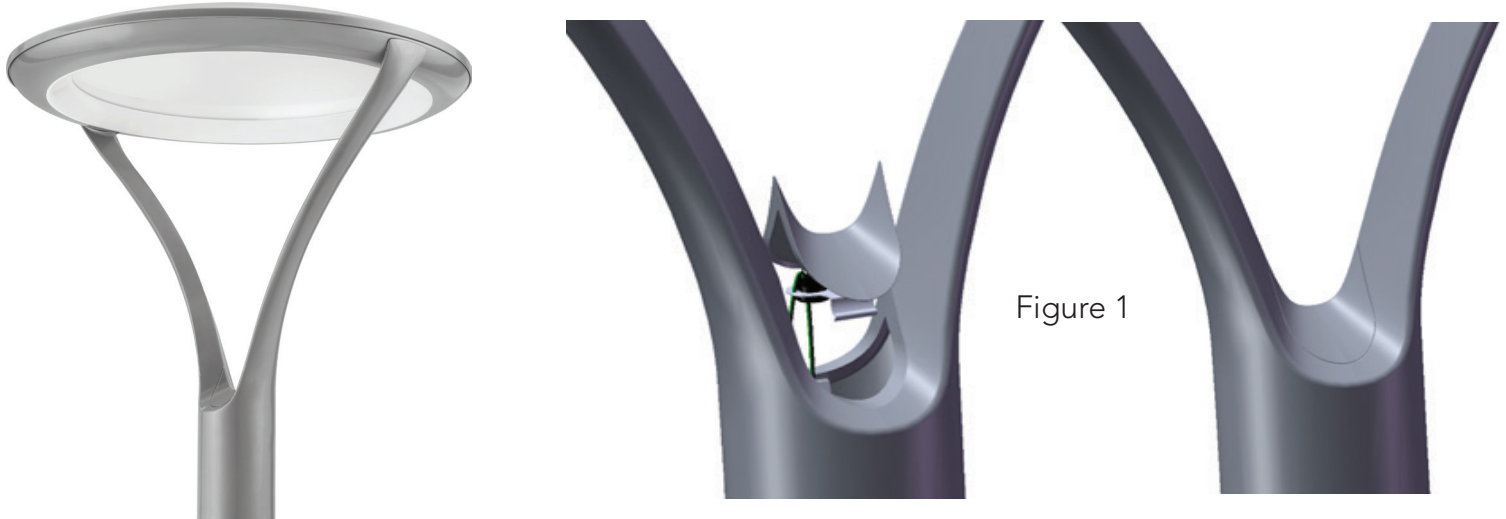
ABL LED General Warnings, Form No. 503.203

© 2010 Acuity Brands Lighting, Inc. All rights reserved. 12/01/10

DELIVERY: Upon receipt of fixture and accessories (packed separately), thoroughly inspect for any freight damage. All damage should be reported to the delivery carrier. Compare the catalog description listed on the packing slip with the fixture label on the inside of the housing to be sure to correct merchandise was received.

This device complies with Part 15 of the FCC Rules. Operation is subject to the following two conditions: (1) this device may not cause harmful interference, and (2) this device must accept any interference received, including interference that may cause undesired operation.

Tools Required: Flat head screwdriver. **3/16" hex driver. 3/4" socket and extension.** Small Flat Head Screwdriver.



1. Make electrical connections to the fixture before installing it into the pole. Make certain that all power is disconnected prior to installing the fixture.

2. Remove packaging material from wire access cover that is tethered to the input wire.

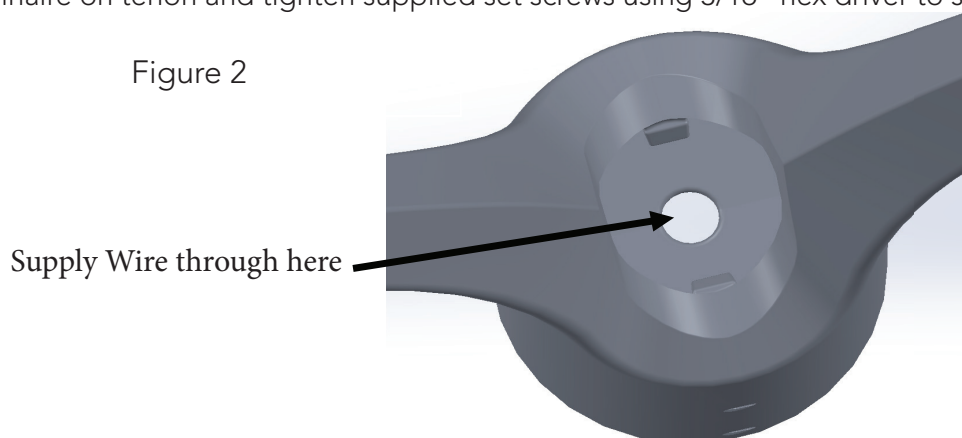
TENON MOUNTING: Additional tools required: 3/16" hex driver

3. Feed supply wire through center of tenon and through center hole in post top arms and make electrical connections with supplied power wires in luminaire (See Figure 2).

4. Ensure all power wires are inside the post top arms and reinstall wire access cover (from step 2) by firmly pressing the cover back into place. Installation is typically easier by placing one clip into position with the door contacting the arms and then completing installation by applying pressure on the opposite side clip. Cover should snap into place and be held by the clips (See Figure 1).

5. Center luminaire on tenon and tighten supplied set screws using 3/16" hex driver to securely mount luminaire to tenon.

Figure 2



Installation Instructions RADPT LED

OPEN TOP POLE MOUNTING: Additional tools required: ¾" socket and extension

NOTE: This installation must be done with the pole upright. If desired, start installation with pole on the ground and tighten nut snug then raise pole upright and finish installation by backing out nut, adjusting luminaire, and re-torquing nut to final recommended torque (15-20 ft lbs).

1. Locate the slip fitter assembly inside the luminaire box and remove from additional packaging.
2. Feed supply wire through holes inside the slip fitter bottom plate and casting, and remove top cap nut and lockwasher from slip fitter threaded rod.
3. Pull supply wire through the hole offset from the center in the luminaire (See Figure 3) and insert threaded rod of slip fitter through center hole in luminaire. Reinstall lockwasher and cap nut on threaded rod once slip fitter is installed in luminaire base.

NOTE: The Slip fitter casting is keyed with the base of the arms. Ensure that the 3 grooves of the slip fitter casting are aligned with the 3 ridges inside the luminaire base.

4. Once the slip fitter is successfully installed in the luminaire make your connections with supplied power wires in luminaire and slide the internal slip fitter assembly and luminaire into the pole (See Figure 4).
5. Using a ¾" socket with extension, tighten the internal slip fitter (See Figure 5). The luminaire is self-leveling on the pole and should not move or rotate after the nut is tightened. Torque slip fitter nut to 15-20 ft lbs.

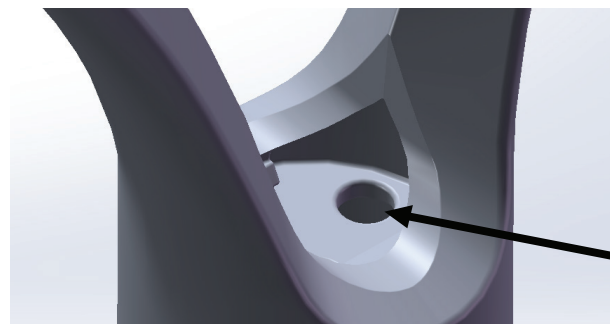


Figure 3



Figure 4



Figure 5

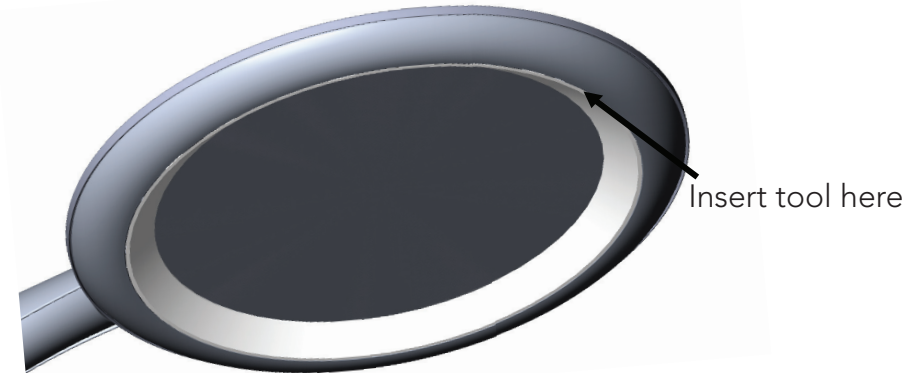
Installation Instructions
RADPT LED
House side shield

Tools Required: Small Flat Head Screwdriver

1. To install the house side shield you must first remove the existing white plastic transition zone ring surrounding the lens on the underside of the luminaire. (See Figure HS1)



Figure HS1



2. Carefully insert the small flat head screwdriver between the edge of the plastic transition zone ring and the edge of the lower housing using care not to scratch luminaire paint or lens. (See Figure HS1)

3. Once the tool is between the two parts gently pry down on the transition zone ring to detach all 8 clips holding it in place, remove and discard. (See Figure HS2)

Note: After 2-3 clips have been removed with the screwdriver, the rest of the clips can be removed by hand. It is usually easier to remove the clip and avoid breakage by locating the tool directly on the clip and prying in each of the clip locations.

8 clip recesses
in luminaire

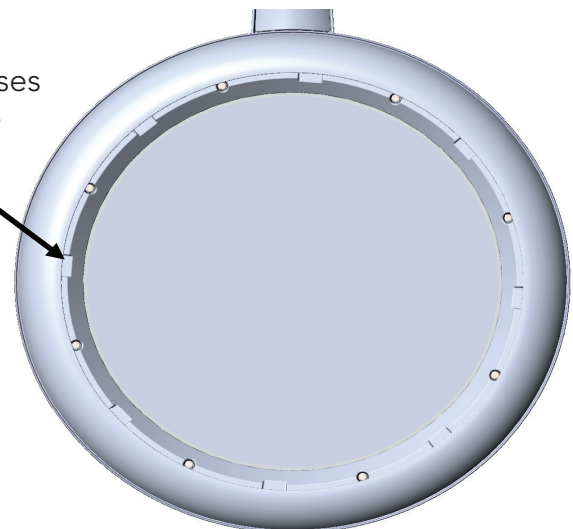


Figure HS2

Installation Instructions

RADPT LED

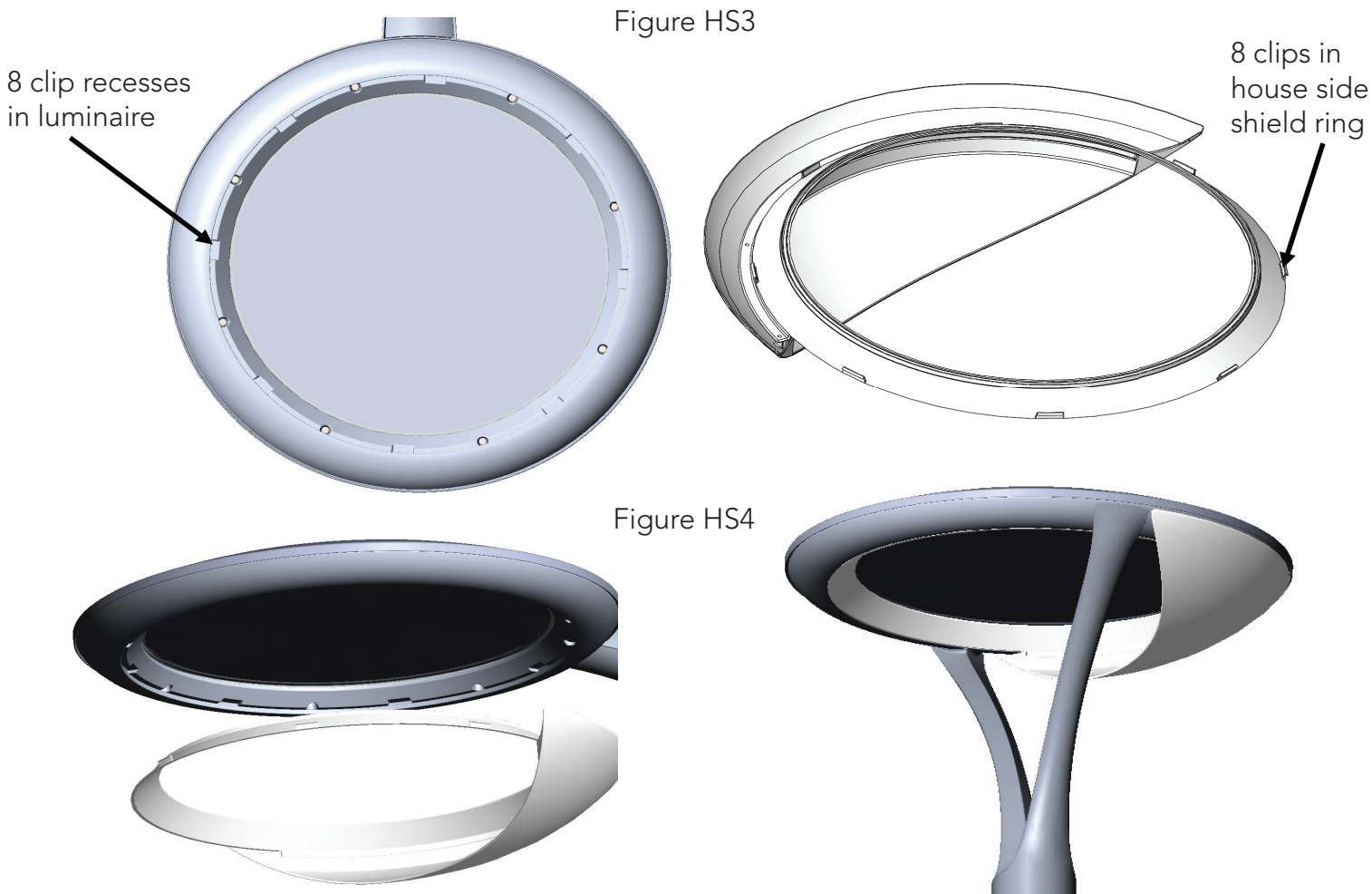
House side shield

4. To install the house side shield, first rotate the house side shield ring to a position where the side shield is blocking light in the desired direction. Note: The house side shield can be placed in 180 degree increments on the post top fixture between the arms.

5. Once the side shield is in the desired orientation, locate the 8 clips of the house side shield ring and align with the 8 corresponding recesses in the luminaire housing. (See Figure HS3)

6. Once aligned, press all 8 clips and snap the house side shield ring firmly in place to complete installation. (See Figure HS4)

NOTE: It is typically easier to install the clips in the area of the house side shield first and then install the remaining clips around the perimeter of the transition zone ring. Ensure that all clips are fully snapped in and there are no large gaps between the lens and the transition zone ring.



Troubleshooting: If this fixture fails to operate properly, check to make sure:

- The fixture is wired correctly.
- The fixture is grounded correctly.
- The line voltage at the fixture is correct.

If all these variables have been checked and the fixture still does not operate as specified, contact your local Lithonia Lighting distributor.

