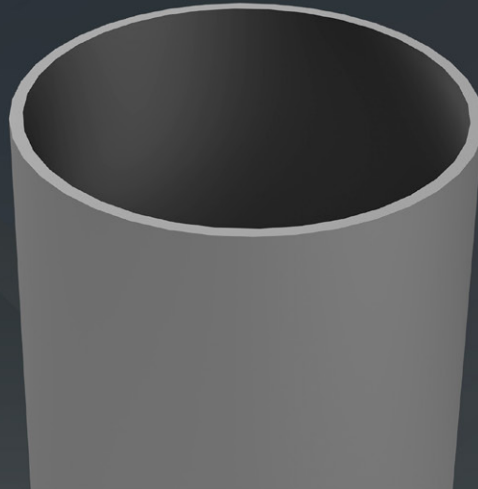


ROUND STRAIGHT STEEL POLE



**HEIGHT**  
10' - 30'

**POLE SHAFT**

The pole shaft material is a weldable grade hot rolled commercial quality steel tubing with a minimum yield of 46,000 psi. Conforms to ASTM A500 Grade B Standards. Poles have ground lug welded inside hand-hole opposite side of the hand-hole. Pole shaft is welded to base plate on top and bottom of base plate.

**BASE PLATE**

The Base Plate is manufactured from structural hot rolled steel that meets or exceeds a minimum yield strength of 36,000 psi, conforms the ASTM-A36 standards. Base Plate vary in size from 1" thick for poles 21 feet and over, 3/4" thick for poles 10 to 20 feet.

**ANCHOR BOLTS**

All anchor bolts are hot dipped galvanized steel and come with two galvanized nuts and washers per bolt. Minimum yield strength 50,000 psi. Anchor bolts are not included for Custom Bolt Circle.

**BASE COVER**

All base covers are fabricated two-piece 6063 aluminum and powder coated to match the pole. Square base cover comes standard, Round base cover optional.

**HAND-HOLE**

A reinforced hand-hole is 12" on center from the base plate and is constructed of 3"x 5" rectangular steel tubing which is welded to pole shaft for added strength. The hand-hole covers are provided with internal bridge support and powder coated to match pole finish.

**POLE CAP**

All poles come with a removable polymer pole cap installed. All pole caps are black finish. Aluminum Pole Cap option is painted to match pole.

**FINISH**

All poles are treated with shot blast media for a near white finish, power blasted with 100 psi prior to powder coat application. Electrostatically applied AAMA 2604 polyester powder coat with a 3 to 5 mil thickness for maximum adherence.

**MARINE GRADE FINISH**

All poles are washed through a 5-stage cleaning system with a deionized rinse, a 3 to 5 mils zinc rich durable polyester primer powder coat, followed by a 3 to 5 mils super durable AAMA 2604 polyester powder coat finish.

Recommended for applications near the coastline or in demanding environments.

**GALVANIZED FINISH**

All poles are Hot Dipped Galvanized in a multi stage process. Galvanizing Specification, Zinc (Hot Dipped Galvanized) per ASTM A 123/A 123M - 02

Zinc coatings on threaded materials shall conform to specification A 153 /A 153M. The coating shall be continuous and reasonably smooth and uniform in thickness and in weight.

Galvanizing Adherence - The Zinc coating shall withstand handling consistent with the nature and thickness of the coating and normal use of the article without peeling or flaking.

Provides the most protection against the elements in coastal and harsh environments.

**GALVANIZED UNDER POWDER**

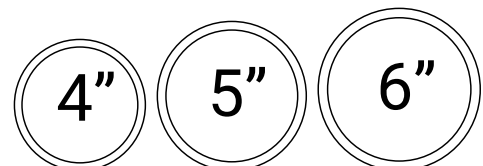
Galvanized Under Powder (GUP) adheres to above galvanized specification, and the second stage is a light sand blast on the outside of the pole, third stage is a 3-5 mils AAMA 2604 polyester powder coat finish for maximum adherence.

**VIBRATION DAMPENNER**

The Vibration Dampener is factory installed and consists of a rugged galvanized chain coated with heavy duty polyester tubing that is factory secured at the bottom 2-3rds of the pole and can optionally be secured in the field by a contractor at the base during installation.

**BUY AMERICAN**

To ensure the latest BAA/TAA/BABA Standards are being met, please select BAA, TAA, or BABA in the options section. Please contact the factory before placing an order for any NLS products requesting BAA (Buy American Act), TAA (Trade American Act), or BABA (Build America, Buy America).



Project Name:

Type:

# RSSP ORDERING GUIDE

Cat#	Height	Pole Dimension	Gauge	Base Pattern
Round Straight Steel Pole <b>(RSSP)</b>	10' <b>(10)</b>	4" Round <b>(4R)</b>	.120 Wall Thickness <b>(11G)</b>	(10'-20') 9"- 10 3/8" Bolt Circle <b>(9BC)</b>
	12' <b>(12)</b>	5" Round <b>(5R)</b>	.188 Wall Thickness <b>(7G)</b>	(22'-30') 11 1/2"- 14" Bolt Circle <b>(12BC)</b>
	14' <b>(14)</b>	6" Round <b>(6R)</b>		Custom Bolt Circle <b>(CBC)</b> <i>* Consult Factory</i>
	16' <b>(16)</b>			
	18' <b>(18)</b>			
	20' <b>(20)</b>			
	22' <b>(22)</b>			
	24' <b>(24)</b>			
	25' <b>(25)</b>			
	26' <b>(26)</b>			
	28' <b>(28)</b>			
	30' <b>(30)</b>			

Mounting	Color	Bolts	Options
Single <b>(SGL)</b>	Bronze Textured <b>(BRZ)</b>	3/4" x 30" <b>(3430)</b>	GFI Kit <b>(GFI20A)</b> <sup>3, 4, 5</sup>
Double <b>(D-90)</b> <b>(D-180)</b>	White Textured <b>(WHT)</b>	1" x 36" <b>(136)</b>	20 Amp Weather Proof Receptacle
Triple <b>(T-90)</b> <b>(T-120)</b>	Smooth White Gloss <b>(SWT)</b>	Less Anchor Bolts <b>(LAB)</b>	GFI Provision Only <b>(PROV)</b> <sup>4, 5</sup>
Quad <b>(QD)</b>	Silver Metallic <b>(SVR)</b>		Galvanized <b>(GLV)</b>
No Drill <b>(ND)</b>	Black Textured <b>(BLK)</b>		Round Base Cover <b>(RBC)</b>
<i>*Tenon Option</i>	Smooth Black Gloss <b>(SBK)</b>		<i>*Consult Factory for Pricing</i>
<b>Tenon</b>	Graphite Textured <b>(GPH)</b>		Galvanized Under Powder <b>(GUP)</b>
2-3/8" Round <b>(T2R)</b>	Grey Textured <b>(GRY)</b>		1/2" Coupling <b>(COUP)</b> <sup>4</sup>
3" Round <b>(T3R)</b>	Green Textured <b>(GRN)</b>		<i>*Specify Location</i>
3-1/2" Round <b>(T312R)</b>	Hunter Green Textured <b>(HGN)</b>		Vibration Dampener <b>(VD)</b>
4" Round <b>(T4R)</b>	Custom <b>(CS)</b>		Extra Hand Hole <b>(XHH)</b> <sup>4</sup>
4-1/2" Round <b>(T412R)</b>			<i>*Specify Location</i>
			Marine Grade Finish <b>(MGF)</b>
			UL Certified with label <b>(UL)</b> <sup>1</sup>
			Aluminum Pole Cap <b>(APC)</b> <sup>2</sup>
			Buy American Act <b>(BAA)</b> <sup>2</sup>
			Trade Agreement Act <b>(TAA)</b> <sup>2</sup>
			Build America Buy American <b>(BABA)</b> <sup>2</sup>

## NOTES:

1. Aluminum Pole Cap must be selected for UL Certified Pole Option
2. Consult Factory
3. Standard weatherproof cover comes standard with option.  
For lockable cover requests, please contact factory
4. Specify the Height (in feet) from ground level and degree orientation  
from wire access slot.
5. 120V Only



701 Kingshill Place, Carson, CA 90746  
Call Us Today (310) 341-2037

nlsighting.com

# PRODUCT SPECIFICATIONS

Max. allowable EPA - RSSP poles (per AASHTO LRFDLTS-1)

Catalog Number	Shaft Length, ft	Wall thickness, in.	Shaft dia., in.	Base Plate, in.	Bolt Circle, in.	Bolts	80 mph	Max. wt. (lb)	90 mph	Max. wt. (lb)	100 mph	Max. wt. (lb)	110 mph	Max. wt. (lb)	115 mph	Max. wt. (lb)	120 mph	Max. wt. (lb)	130 mph	Max. wt. (lb)	140 mph	Max. wt. (lb)	150 mph	Max. wt. (lb)	160 mph	Max. wt. (lb)	170 mph	Max. wt. (lb)	180 mph	Max. wt. (lb)
RSSP-10-4R-11G-9BC-3430	10	0.120	4	9" sq.	9	3/4"x30"	20.0	500	20.0	500	20.0	500	20.0	500	18.3	458	16.6	416	13.9	347	11.7	292	10.0	250	8.7	217	7.6	190	6.8	169
RSSP-12-4R-11G-9BC-3430	12	0.120	4	9" sq.	9	3/4"x30"	20.0	500	20.0	500	20.0	500	16.1	402	14.5	363	13.1	329	10.8	270	9.0	225	7.6	190	6.6	165	5.7	143	5.0	126
RSSP-14-4R-11G-9BC-3430	14	0.120	4	9" sq.	9	3/4"x30"	20.0	500	20.0	500	16.4	409	13.0	326	11.7	292	10.5	262	8.5	213	7.0	174	5.8	145	4.9	124	4.3	108	3.7	93
RSSP-16-4R-11G-9BC-3430	16	0.120	4	9" sq.	9	3/4"x30"	20.0	500	16.3	408	12.6	316	9.9	247	8.8	220	7.8	196	6.2	156	4.9	124	4.0	100	3.4	85	2.9	73	2.5	63
RSSP-18-4R-11G-9BC-3430	18	0.120	4	9" sq.	9	3/4"x30"	18.3	458	13.7	344	10.4	261	8.0	201	7.1	177	6.2	154	4.8	119	3.6	91	2.8	70	2.3	60	2.0	60	1.6	60
RSSP-20-4R-11G-9BC-3430	20	0.120	4	9" sq.	9	3/4"x30"	15.7	393	11.6	289	8.6	216	6.5	162	5.5	139	4.8	120	3.5	88	2.5	62	1.8	60	1.4	60	1.1	60	0.9	60
RSSP-20-4R-7G-9BC-3430	20	0.188	4	9" sq.	9	3/4"x30"	20.0	500	19.6	489	15.1	378	11.8	294	10.5	262	9.3	232	7.3	183	5.7	144	4.6	116	3.9	98	3.3	84	2.9	72
RSSP-20-5R-11G-9BC-3430	20	0.120	5	9" sq.	9	3/4"x30"	20.0	500	19.7	491	14.9	374	11.5	288	10.1	253	9.0	226	7.4	186	6.2	156	5.2	131	4.5	112	3.8	96	3.3	83
RSSP-20-5R-7G-9BC-3430	20	0.188	5	9" sq.	9	3/4"x30"	20.0	500	20.0	500	20.0	500	16.2	406	14.4	361	13.0	325	10.8	271	9.1	228	7.8	195	6.7	167	5.8	146	5.1	127
RSSP-22-4R-11G-12BC-136	22	0.120	4	12" sq.	12	1"x36"	12.3	308	8.9	222	6.4	161	4.6	115	3.9	97	3.2	80	2.1	60	1.3	60	0.7	60	0.5	60	0.3	60	0.1	60
RSSP-22-4R-7G-12BC-136	22	0.188	4	12" sq.	12	1"x36"	20.0	500	15.6	389	11.8	295	9.0	226	8.0	199	7.0	174	5.3	133	4.0	100	3.1	77	2.6	64	2.2	60	1.8	60
RSSP-22-5R-11G-12BC-136	22	0.120	5	12" sq.	12	1"x36"	20.0	500	15.4	385	11.5	287	8.6	215	7.5	187	6.6	164	5.4	134	4.4	110	3.7	92	3.1	77	2.6	65	2.2	60
RSSP-22-5R-7G-12BC-136	22	0.188	5	12" sq.	12	1"x36"	20.0	500	20.0	500	20.0	500	15.8	396	14.1	351	12.7	316	10.5	263	8.9	221	7.5	188	6.5	162	5.6	140	4.9	122
RSSP-25-4R-11G-12BC-136	25	0.120	4	12" sq.	12	1"x36"	9.7	242	6.7	167	4.5	112	2.9	72	2.3	60	1.7	60	0.7	60	0.0	-	0.0	-	0.0	-	0.0	-	0.0	-
RSSP-25-4R-7G-12BC-136	25	0.188	4	12" sq.	12	1"x36"	17.1	428	12.5	313	9.3	231	6.8	170	5.8	145	5.0	124	3.5	88	2.4	60	1.6	60	1.2	60	0.9	60	0.7	60
RSSP-25-5R-11G-12BC-136	25	0.120	5	12" sq.	12	1"x36"	16.9	423	12.1	302	8.7	217	6.2	154	5.1	128	4.4	110	3.5	87	2.7	68	2.2	60	1.7	60	1.4	60	1.1	60
RSSP-25-5R-7G-12BC-136	25	0.188	5	12" sq.	12	1"x36"	20.0	500	20.0	500	16.4	409	12.5	312	10.9	272	9.7	243	8.0	200	6.7	167	5.6	140	4.8	119	4.0	101	3.5	87
RSSP-26-4R-11G-12BC-136	26	0.120	4	12" sq.	12	1"x36"	8.9	222	6.0	150	3.9	98	2.4	60	1.7	60	1.2	60	0.3	60	0.0	-	0.0	-	0.0	-	0.0	-	0.0	-
RSSP-26-4R-7G-12BC-136	26	0.188	4	12" sq.	12	1"x36"	16.1	401	11.6	290	8.5	212	6.2	154	5.2	130	4.4	109	3.0	74	1.9	60	1.2	60	0.8	60	0.6	60	0.3	60
RSSP-26-5R-11G-12BC-136	26	0.120	5	12" sq.	12	1"x36"	13.3	333	11.1	278	7.9	196	5.4	135	4.4	111	3.7	93	2.9	72	2.3	60	1.8	60	1.4	60	1.1	60	0.8	60
RSSP-26-5R-7G-12BC-136	26	0.188	5	12" sq.	12	1"x36"	12.1	302	16.1	403	13.9	347	11.5	287	10.0	249	8.9	222	7.3	182	6.0	150	5.0	125	4.2	106	3.6	89	3.1	77
RSSP-28-4R-7G-12BC-136	28	0.188	4	12" sq.	12	1"x36"	14.1	353	10.0	250	7.1	177	4.9	122	4.0	100	3.3	82	2.0	60	1.0	60	0.3	60	0.1	60	0.0	-	0.0	-
RSSP-28-5R-11G-12BC-136	28	0.120	5	12" sq.	12	1"x36"	13.6	341	9.4	234	6.3	158	4.0	101	3.1	78	2.5	63	1.8	60	1.3	60	0.9	60	0.6	60	0.4	60	0.2	60
RSSP-28-5R-7G-12BC-136	28	0.188	5	12" sq.	12	1"x36"	20.0	500	17.8	445	13.1	329	9.7	242	8.3	207	7.2	181	5.9	147	4.8	120	3.9	98	3.2	81	2.7	68	2.3	60
RSSP-28-6R-7G-12BC-136	28	0.188	6	12" sq.	12	1"x36"	20.0	500	20.0	500	20.0	500	17.0	425	15.4	385	14.0	349	11.6	290	9.7	243	8.2	206	7.1	177	6.1	152	5.3	132
RSSP-30-5R-11G-12BC-136	30	0.120	5	12" sq.	12	1"x36"	11.7	293	7.8	194	4.9	122	2.8	69	1.9	60	1.4	60	0.8	60	0.4	60	0.1	60	0.0	-	0.0	-	0.0	-
RSSP-30-6R-11G-12BC-136	30	0.120	6	12" sq.	12	1"x36"	18.6	466	12.9	321	9.0	225	7.0	175	6.2	154	5.5	136	4.3	108	3.5	87	2.8	69	2.2	60	1.8	60	1.4	60
RSSP-30-5R-7G-12BC-136	30	0.188	5	12" sq.	12	1"x36"	20.0	500	15.6	391	11.3	282	8.1	201	6.8	169	5.8	146	4.6	115	3.7	92	3.0	74	2.4	60	1.9	60	1.5	60
RSSP-30-6R-7G-12BC-136	30	0.188	6	12" sq.	12	1"x36"	20.0	500	20.0	500	18.6	465	14.9	371	13.4	334	12.1	303	10.0	250	8.3	208	7.0	176	6.0	149	5.1	127	4.4	110

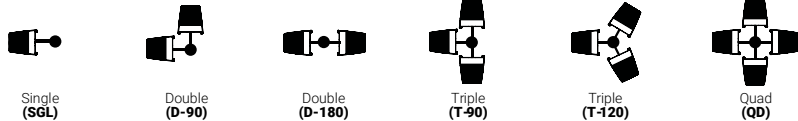
\*Pole Assemblies With EPA>9.0 Require Specific Review

**CAUTION:** Installation of poles without luminaire(s) will compromise pole strength. Any accessories attached to the pole, or other modifications done in the field, will compromise the pole strength and may result in pole failure. Wind load evaluations and provisions for appendages such as banner arms, signage, cameras, etc., must be evaluated and approved by the factory prior to placing an order. Additional evaluation and approval should be performed by the customer's local structural engineer on the project.

\*Anchor Bolts are NOT included with Custom Bolt Circle.  
\*Do NOT pour concrete referencing this drawing. Consult Factory.

\*All wind loading calculations are based on sustained wind force plus an additional 1.3 gust.

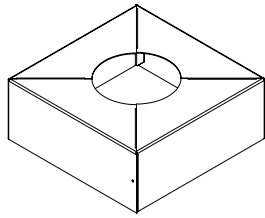
## MOUNTING CONFIGURATION



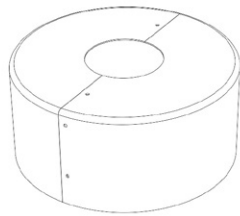
701 Kingshill Place, Carson, CA 90746  
Call Us Today (310) 341-2037

nslighting.com

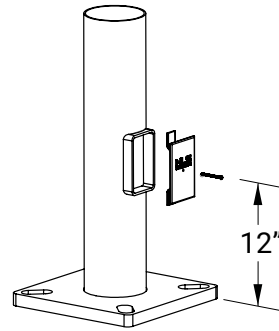
**PRODUCT SPECIFICATIONS**



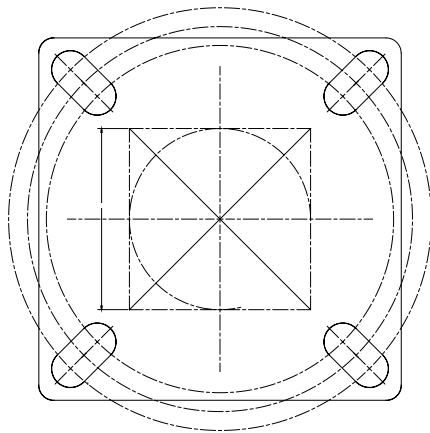
**BASE COVER**



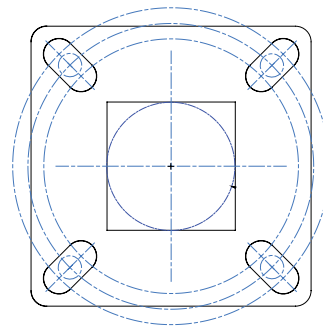
**OPTIONAL ROUND  
BASE COVER**



**BASE DETAIL**



**12" BASE DETAIL**



**9" BASE DETAIL**

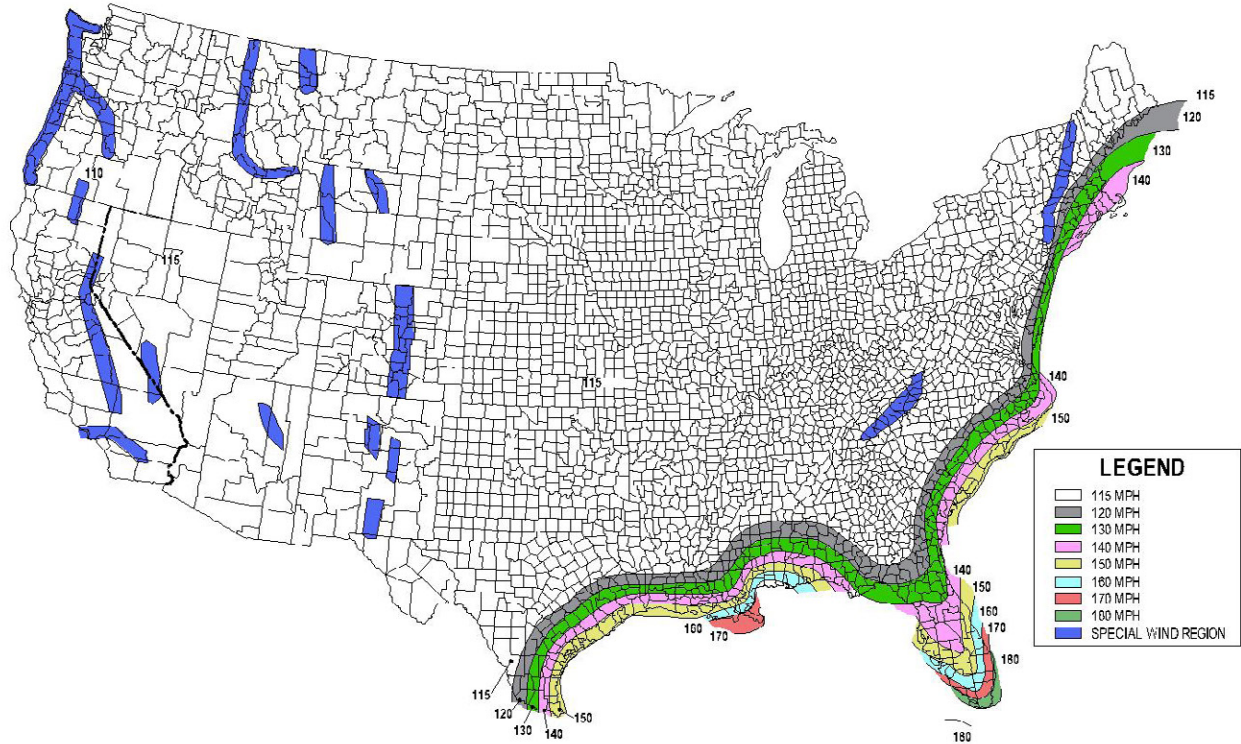


FIG. 3.8-1b - 700-Year MRI Basic Wind Speed, mph (AASHTO LRFDLTS-1)

- 1) All wind load calculations are based on sustained wind force plus and additional 1.3 gust
- 2) Wind Map is to be used as a reference only. Please coordinate with local agencies for further review.
- 3) Wind Map values are based on a 50 year mean recurrence. These values do not account for severe conditions, such as hurricanes, tornadoes, etc...
- 4) For review of poles with additional configurations (arms, banners, shorter/longer pole lengths, etc...), please contact factory.

**BUY AMERICAN OPTION**

While all of the NLS Lighting products listed in this document qualify for the Buy America(n) Act of 1933, we reserve the right to change our listings without notice.

The information provided above is for general informational purposes only. We encourage you to consult legal professionals for advice particular to your projects concerning BAA, TAA, BABA or Buy America.

Additional NLS Products that meet BAA, TAA standards can be found at the following link:

[https://nslighting.com/wp-content/uploads/cs/NLS\\_BuyAmerica\(n\).pdf](https://nslighting.com/wp-content/uploads/cs/NLS_BuyAmerica(n).pdf)